



Q Station (BellQ Pro) User Guide For iOS

*Q Station Firmware: r389 and above
iOS BellQPro Version: 1.4.246*

(Support iOS System: 6.1 and above)

2015-05-16

All Rights Reserved.

CONTENT

1	INTRODUCTION	3
1.1	VERIFY KIT CONTENTS	3
1.2	CONNECTION	4
2	CONFIGURATION	7
2.1	ENTER CONFIGURATION PAGE	7
2.2	CONFIGURATION IN DETAIL	8
2.2.1	<i>Music Service</i>	8
2.2.2	<i>Basic Settings</i>	11
2.2.3	<i>Internet Connection</i>	17
2.2.4	<i>Upgrade Firmware</i>	23
3	BELLQPRO IN MOBILE	31
3.1	PREPARATION	31
3.2	SINGLE LIGHT CONTROL	33
3.3	GROUP LIGHT CONTROL	37
3.3.1	<i>All Lights & Music Group</i>	37
3.3.2	<i>Add Group</i>	39
3.3.3	<i>Sync Light status</i>	41
3.3.4	<i>Modify Group</i>	42
3.3.5	<i>Delete Group</i>	44
3.4	SETTINGS	45
3.4.1	<i>Scan Device</i>	46
3.4.2	<i>Set Device</i>	47
4	PLAY MUSIC & LIGHT SHOW	48

1 Introduction

Q Station (MB8800) is a product that can make the Q Bulbs blinking synchronously with the rhythm of your music which is in your mobile. Just install the application called “**BellQ**” in your mobile. Then you can control the music play, the color of the Q Bulbs by your mobile.

1.1 Verify Kit Contents

Q Station kit includes the following components. (Figure 1-1)

1. Q Station
2. Three Q Bulbs
3. LAN cable
4. Audio Cable
5. Power Adapter
6. QIG (Quick Installation Guide)

Figure 1-1 Q Station Package Contents



1.2 Connection

Make sure the device and the cables are connected correctly. (Figure 1-2)

1. Plug in Power Adapter to Q Station.
2. Connect the Q Station to the LAN of your Home Router with LAN cable (optional).
(If you want to connect internet wirelessly, please refer to 2.2.3 Internet Connection.)
3. Connect the Audio Cable from your Q Station to the AUX of your stereo or speaker.
4. Make sure the indicator light of Q Station is blinking with red (left) and blue (right).

There're 2 indicator lights. (Figure 1-3)

a. The left indicator light shows the Q Station status.

If the left indicator light blinks with red color, it shows the Q Station is in good status.

b. The right indicator light shows the network status.

If it blinks with blue color, it shows you have not connected to internet.

If it stays blue color, no blink, it shows you have connected to internet.

5. Screw-in the Q Bulbs.

6. Match the Q Bulbs with Q Station

- a. Light up the 3 Q Bulbs.
- b. Press the Match Hole shortly with a needle. (Figure 1-3)

After about 20 seconds, the 3 Q Bulbs will blink with green color one by one.

(The Q Bulb blink with green color shows it has been matched with Q Station.)

Notice:

If any Q Bulb did not blink with green color (stay at white color), please turn off the Q Bulb. And then turn on it, press the Match Hole again. Then you will see the Q Bulb blink with green color.

7. Reset:

If you want to reset Q-station, just press the Reset Hole with a needle for about 10 seconds. (Figure 1-3)

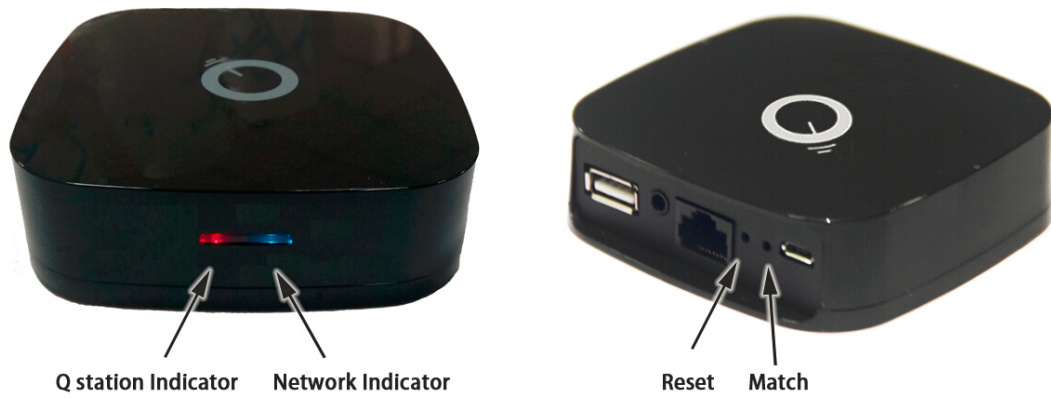
Until you see the blue light turns red color. Then loose.

Then the Q station has been reset successfully.

Figure 1-2 **Power up Q Station**



Figure 1-3 Two indicator lights and Reset, Match holes.



2 Configuration

You can set the Q Station Wi-Fi related configuration in PC or mobile.
The details are as below.

2.1 Enter configuration page

1. Connect your computer's Wi-Fi to Q Station SSID. (Figure 2-1)

Notice: By default, Q Station SSID is "bellnetXXXXXX". No Encryption.
(XXXXXX is the last 6 digit of your MAC).

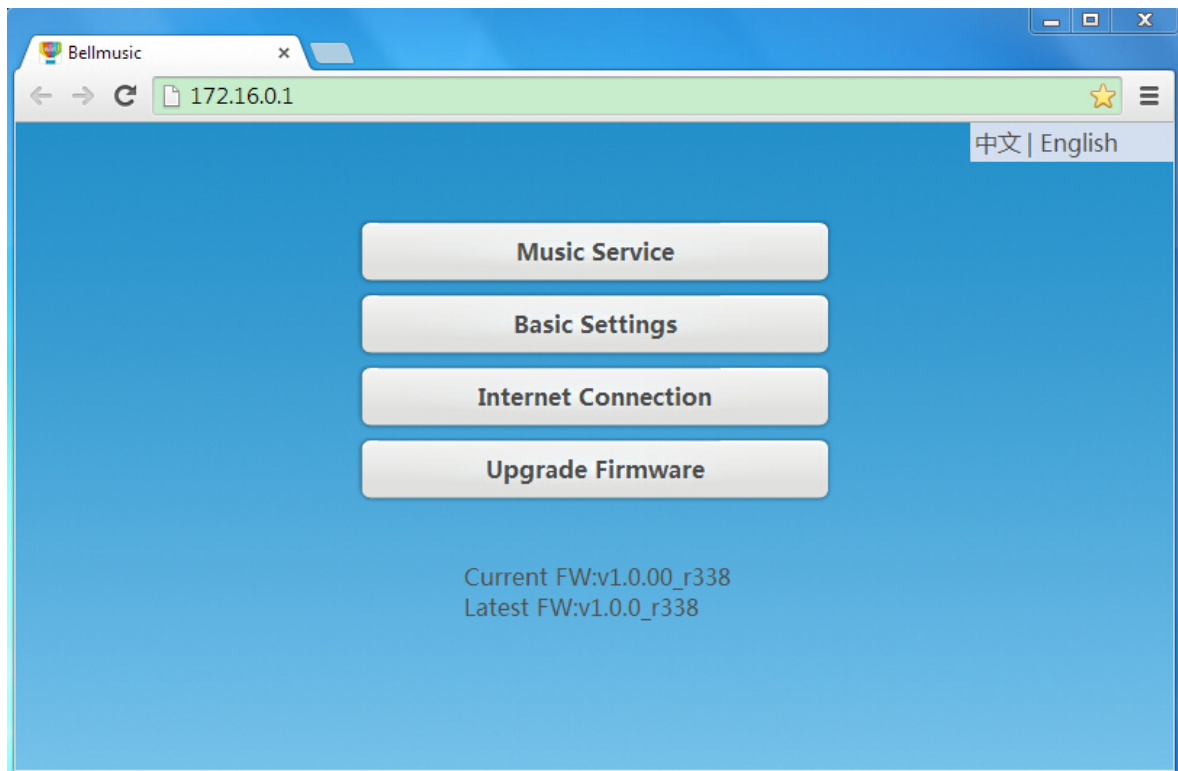
2. Open the web browser and enter "http://172.16.0.1" (by default).

Press Enter key, the Q station configuration home page will appear. (Figure 2-2)

Figure 2-1 Connect your computer's Wi-Fi to Q Station SSID (e.g.bellnetA07AF2).



Figure 2-2 Q Station configuration home page (English)



2.2 Configuration in detail

2.2.1 Music Service

This function controls the **speaker name** in **BellQ**.

(The **BellQ** is one application in mobile that can make the Q Bulb synchronize with the music.)

Notice:

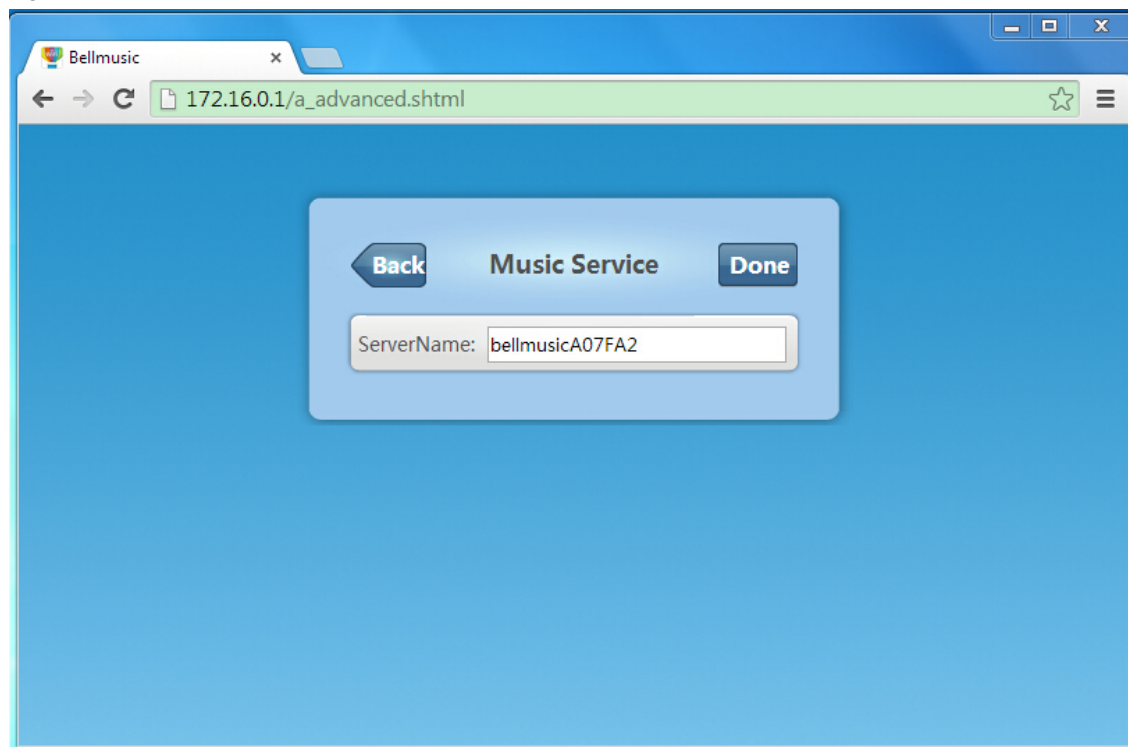
By default, Q Station Speaker Name is “**bellmusicXXXXXX**”.

(XXXXXX is the last 6 digit of your MAC)

Click “**Music Service**”, to enter the management page (*Figure 2-3*).

Click “**Back**”, to go back to Q Station configuration home page (*Figure 2-2*).

Figure 2-3 Music Service screen



You can change the Server Name:

1. **Input the Server Name** which you want in the field. (*Figure 2-4*)
2. **Click “Done”** (*Figure 2-5*), after **10** seconds it will pop-up a window (*Figure 2-6*).
3. **Click “OK”, and refresh** the page. Then the Server Name has been changed successfully. (*Figure 2-7*)

Figure 2-4 Input the Server Name you want in field

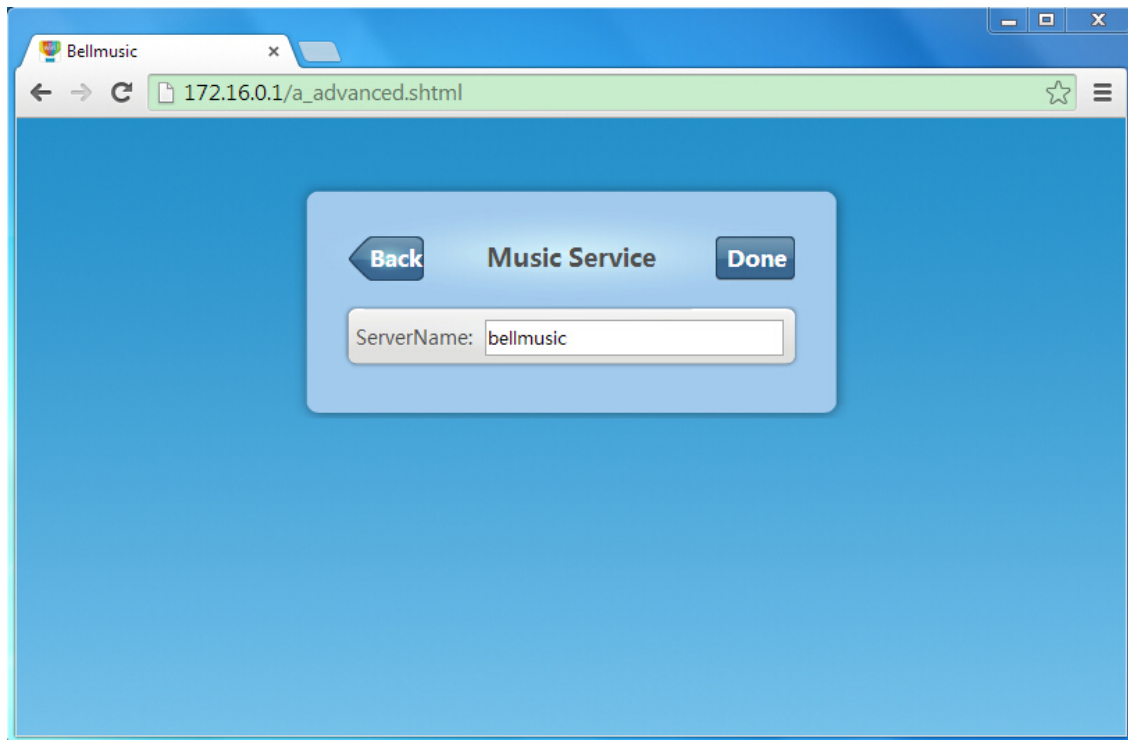


Figure 2-5 Click “Done”

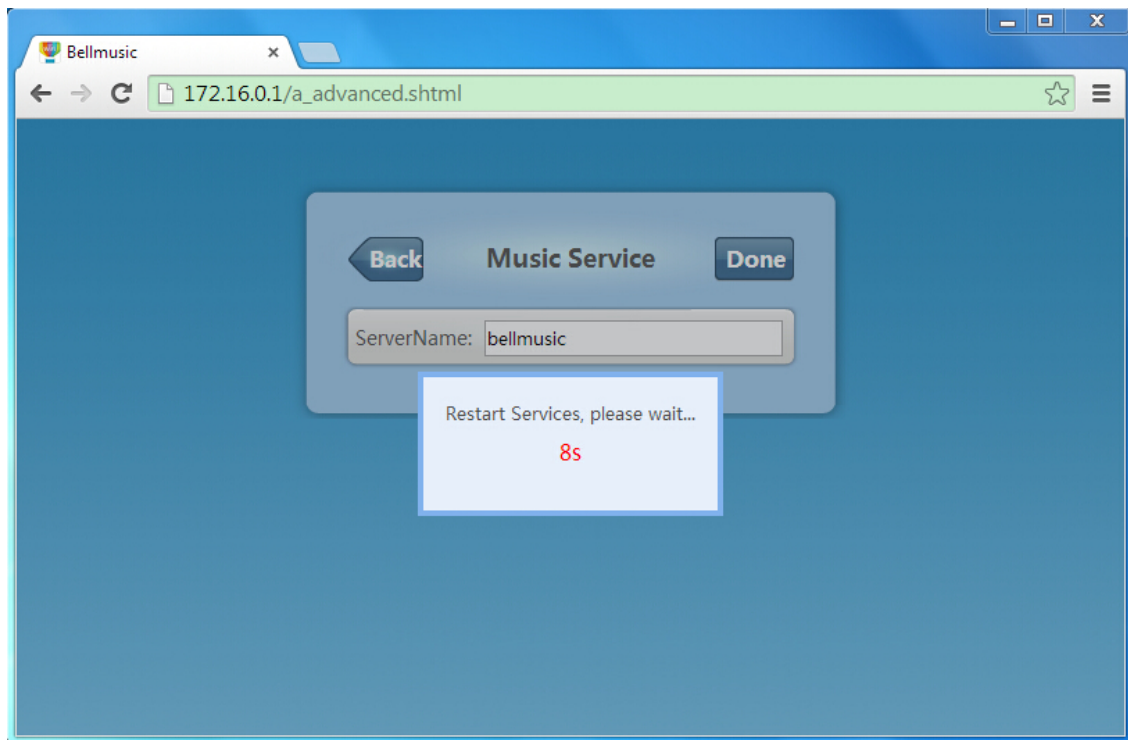


Figure 2-6 After 10 seconds, it will pop-up a window.

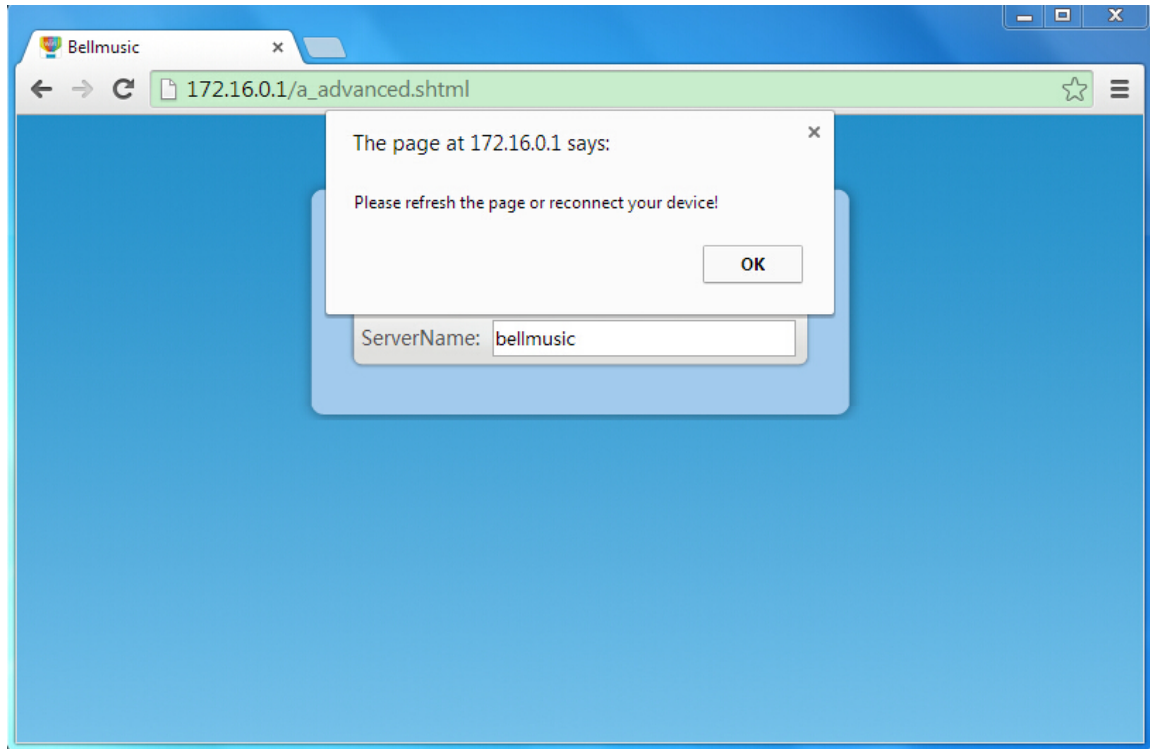
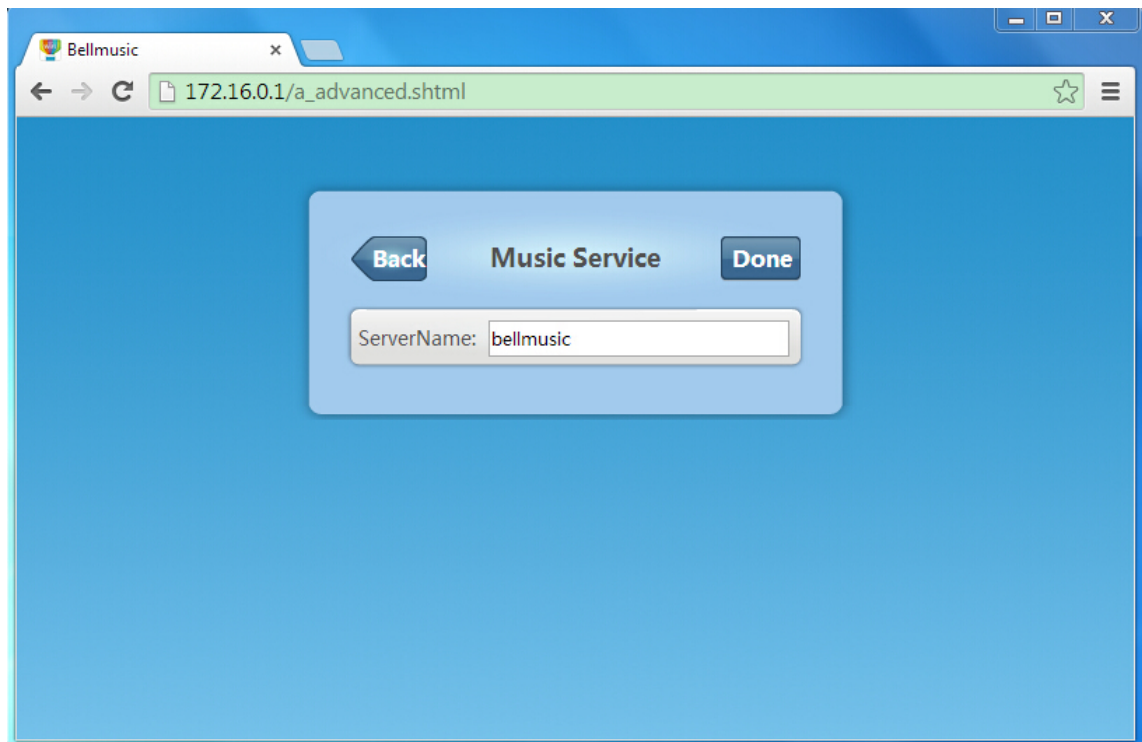


Figure 2-7 Click OK and refresh the page. Then Server Name is changed successfully.



2.2.2 Basic Settings

In this function, you can change the **Q Station Wi-Fi SSID**.

Also, you can set the encryption mode and password for the Wi-Fi.

Notice:

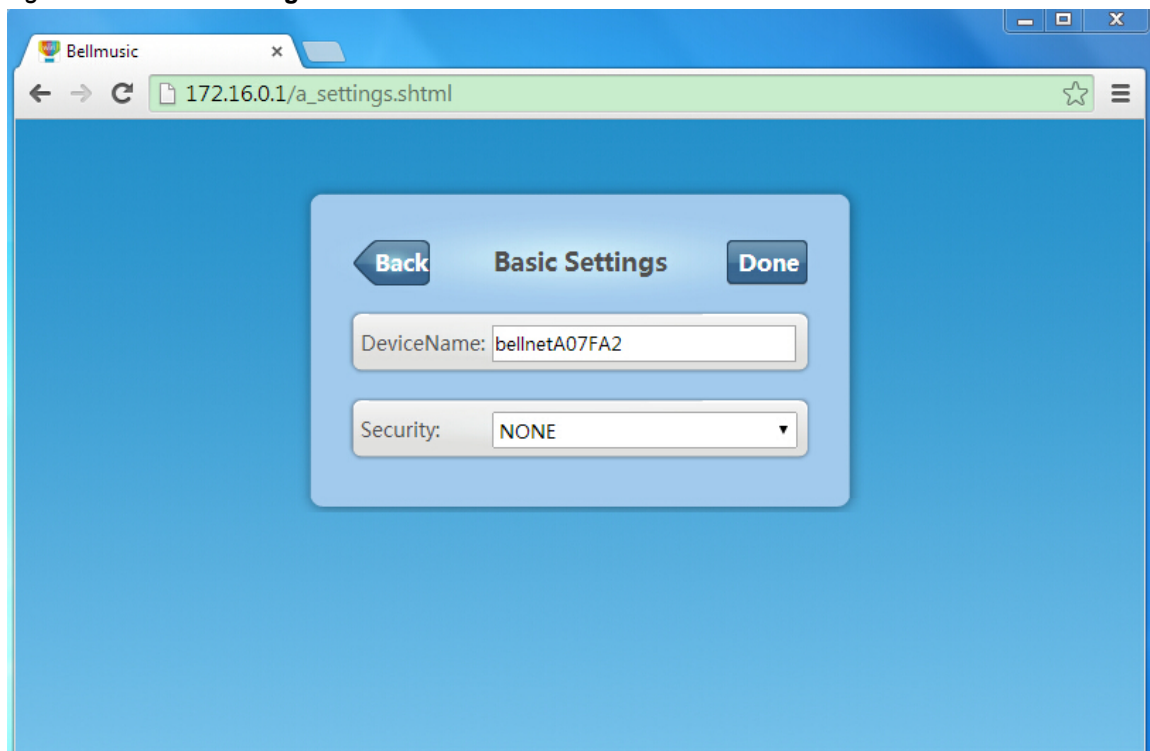
By default, Q Station SSID is “**bellnetXXXXXX**”. No Encryption.

(XXXXXX is the last 6 digit of your MAC)

Click “**Basic Settings**”, to enter the management page (*Figure 2-8*).

Click “**Back**”, to go back to Q Station configuration main page (*Figure 2-2*).

Figure 2-8 Basic Settings screen



Currently: The Wi-Fi SSID is bellnetA07FA2. Encryption Mode is NONE (no encryption).

You can change the Device Name (Known as Wi-Fi SSID):

1. **Input the Device Name** which you want in the field. (*Figure 2-9*)
2. **Click “Done”** (*Figure 2-10*), after **20** seconds, it will pop-up a window (*Figure 2-11*):
Please refresh the page or reconnect your device.
3. **Click “OK”**, then the Device Name has been changed successfully. (*Figure 2-12*)

Notice:

After you changed the Device Name (Q Station SSID in Wi-Fi), you need to connect to your new Q Station SSID again in Wi-Fi.

Figure 2-9 Input the Device Name you want in field

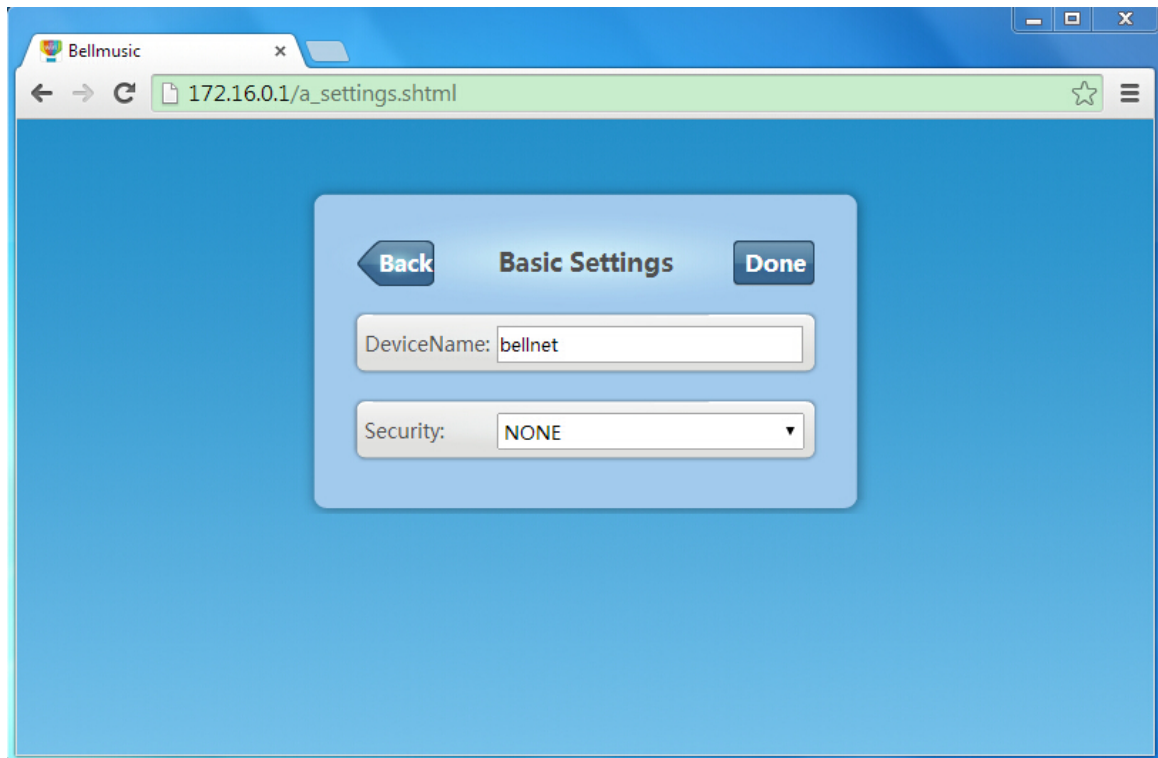


Figure 2-10 Click "Done"

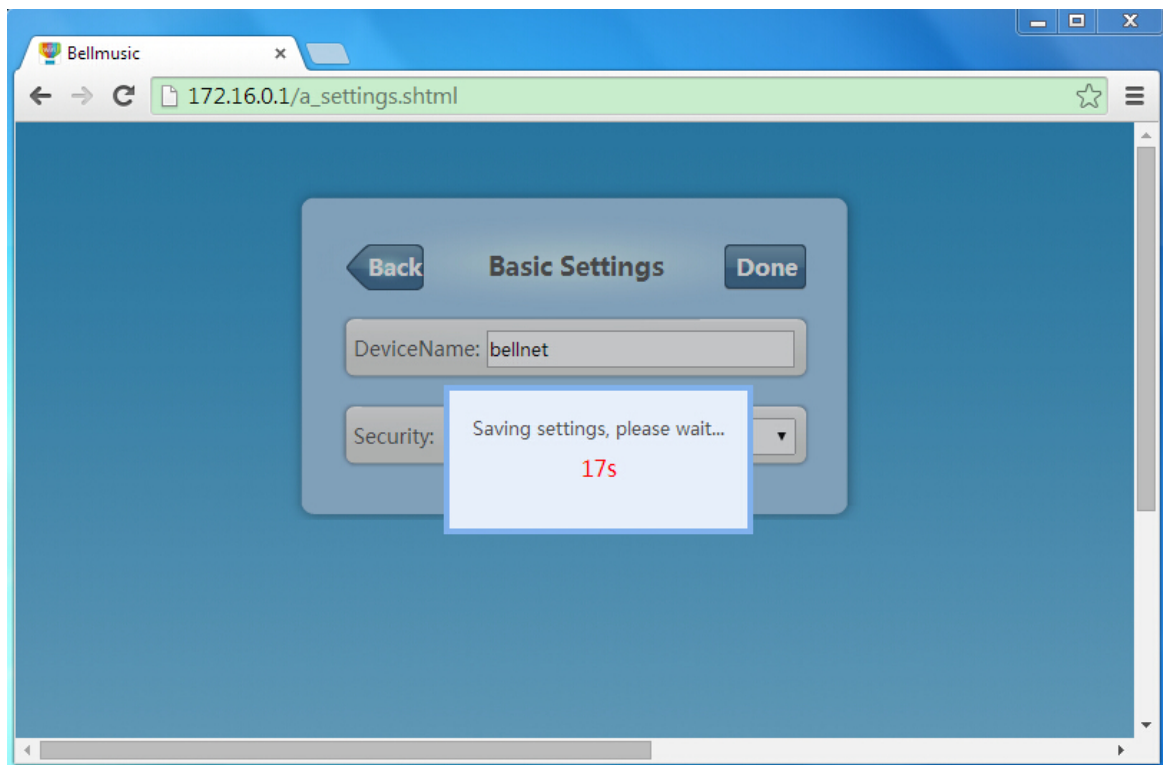


Figure 2-11 After 20 seconds, it will pop-up a window.

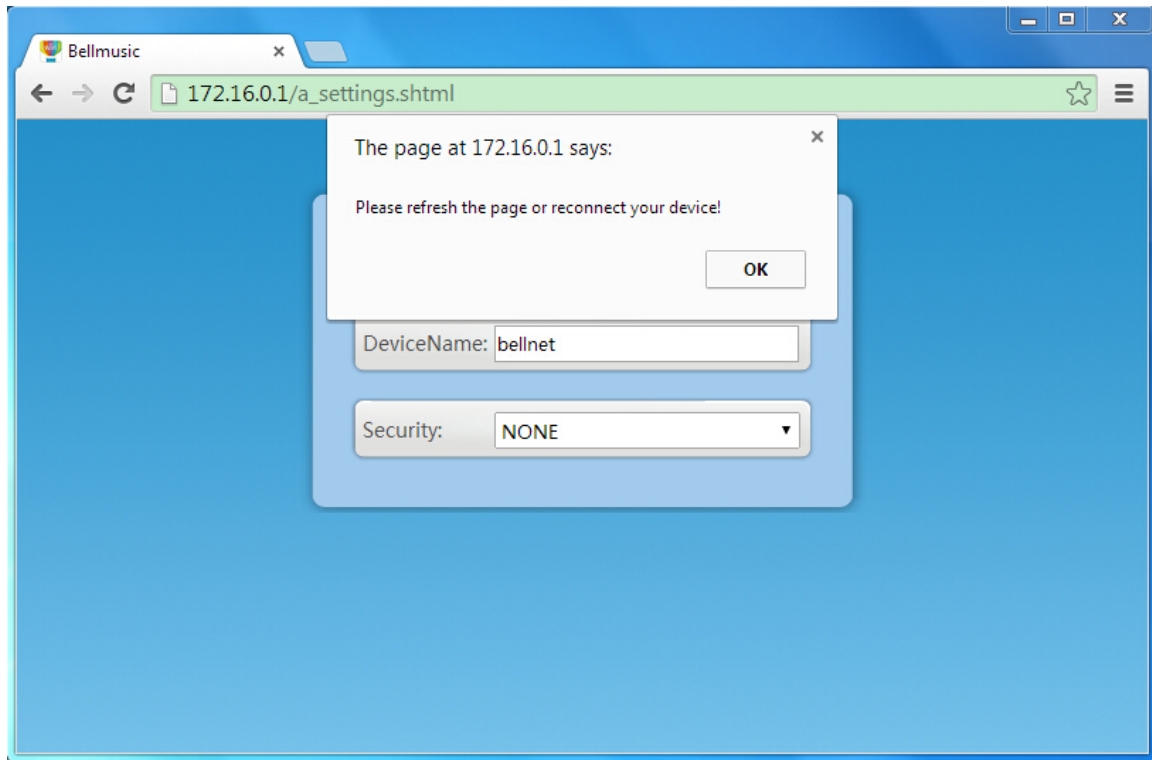
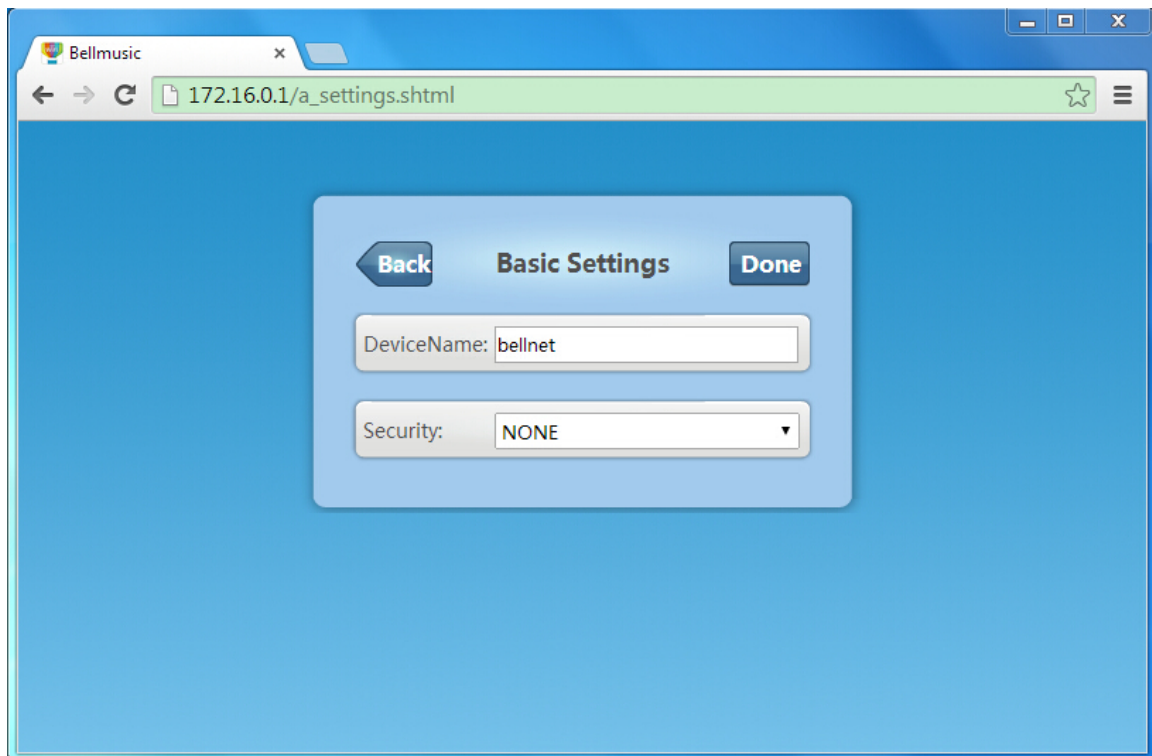


Figure 2-12 Click OK. The Device Name is changed successfully.



In Security drop-down list, there're 4 encryption modes: *(Figure 2-13)*

NONE; WPA; WPA2; WPA/WPA2.

You can change the Wi-Fi encryption mode:

1. **Choose one encryption mode** (e.g. WPA) in Security drop-down list.
2. **Input the Password, Confirm Password.** *(Figure 2-14).*
(Notice: password should not be less than 8 characters.)
3. **Click “Done”** *(Figure 2-15)*, after **20** seconds, it will pop-up a window *(Figure 2-16)*:
Please refresh the page or reconnect your device.
4. **Click “OK”**, then the security mode has been changed successfully. *(Figure 2-17)*

Notice:

After you changed the Wi-Fi encryption mode and password, you need to connect to Q Station again with your new password in Wi-Fi.

Figure 2-13 There're 4 encryption modes:

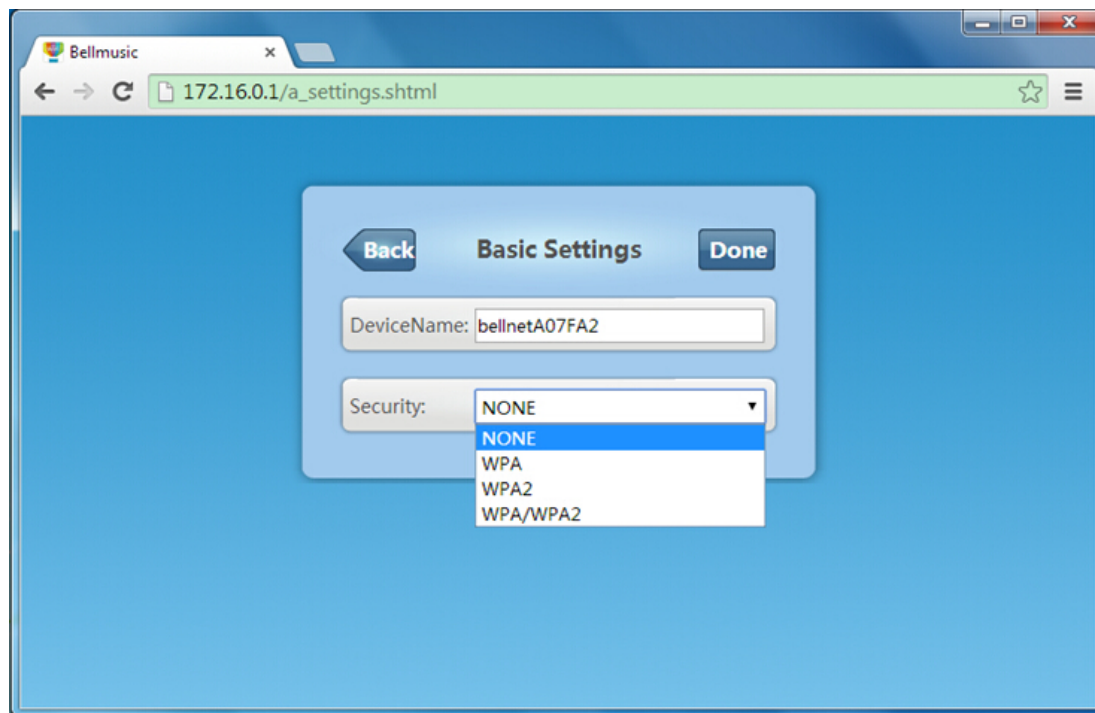


Figure 2-14 Input the Password & Confirm Password

The screenshot shows a web browser window with the address bar displaying "172.16.0.1/a_settings.shtml". The main content area features a "Basic Settings" form. At the top of the form are "Back" and "Done" buttons. Below them are four input fields: "DeviceName" containing "bellnetA07FA2", "Security" set to "WPA", "Password" masked with seven dots, and "Confirm Password" also masked with seven dots.

Figure 2-15 Click "Done"

This screenshot shows the same "Basic Settings" form as in Figure 2-14, but with a modal dialog box centered over it. The dialog box has a light blue background and contains the text "Saving settings, please wait..." in black, followed by "17s" in red, indicating a progress or timeout period. The form fields and buttons are visible but dimmed behind the dialog.

Figure 2-16 After 20 seconds, it will pop-up a window.

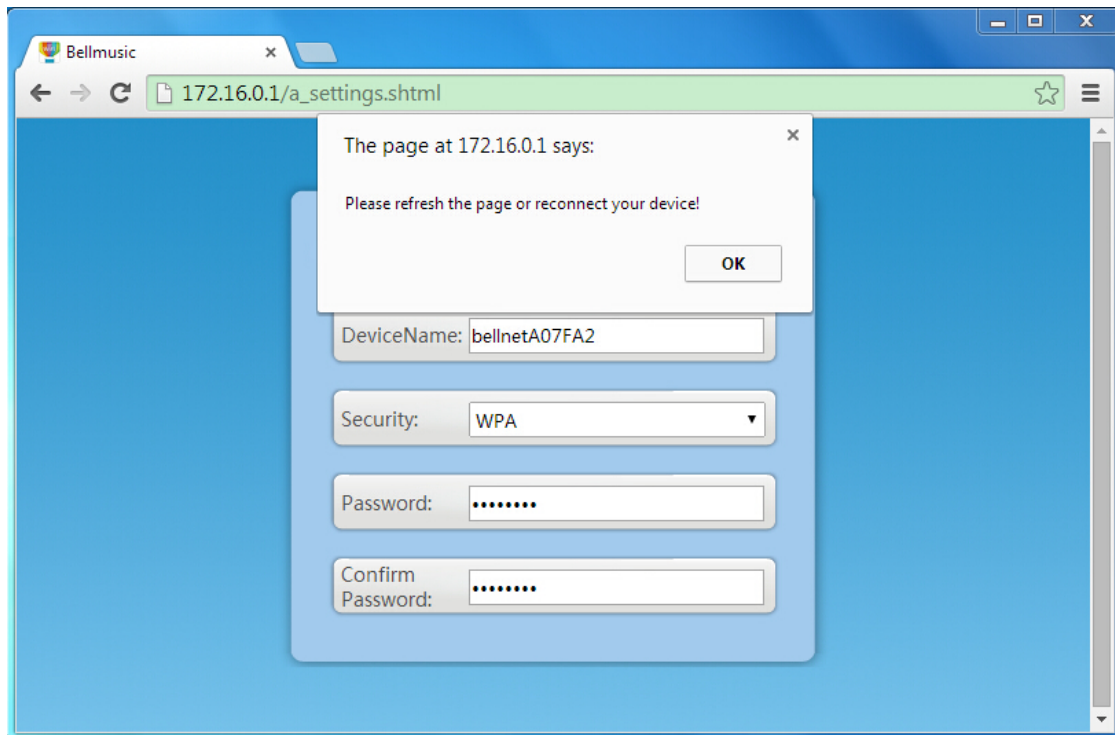
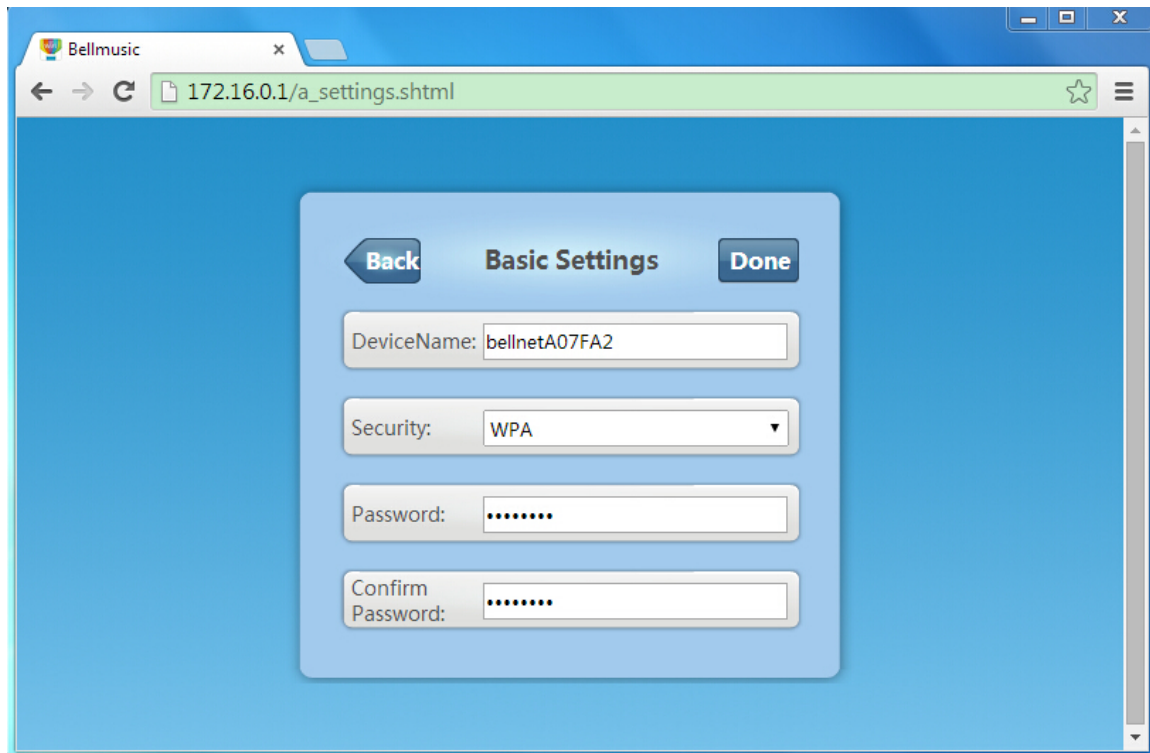


Figure 2-17 Click OK. The security mode is changed successfully.



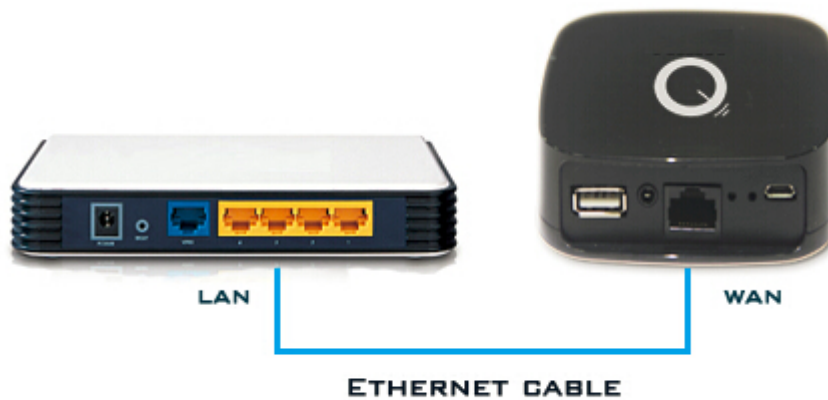
2.2.3 Internet Connection

There're 2 ways to **make your Q Station connect to internet**.
We suggest you to choose Wired Mode, as it is more stable.

1. Wired Mode.

Just connect Q Station (WAN interface) with your home router (LAN interface), using Ethernet cable. *(Figure 2-18)*

Figure 2-18 Connect Q Station (WAN) with home router (LAN)



2. Wireless Mode.

Click “**Internet Connection**”, to enter the screen. *(Figure 2-19)*

Notice:

- By default, the wireless access is **ON**.
You can click **OFF** to close wireless access.
- The page needs some time to search the nearby Wi-Fi SSIDs.
After a few seconds, it will display the nearby Wi-Fi SSIDs. *(Figure 2-20)*

Connect to the nearby Wi-Fi SSID:

- a. **Click the SSID** which you want to connect to (e.g. BellTest).
Then it will **pop-up a window** to let you input the password for the SSID.
(Figure 2-21)
- b. **Input the password** of the SSID, then **click “OK”** *(Figure 2-22)*.
(If you don't want to connect, then click “Cancel”.)
- c. After **25** seconds *(Figure 2-23)*, it will scan the SSIDs again *(Figure 2-24)*.
- d. After a few seconds, it displays all the nearby SSIDs again.
You'll see “**BellTest**” has been connected *(Figure 2-25)*.

Notice:

Once it is successfully connected to internet, the right indicator light should be a steady blue color. Otherwise it will be blinking.

Figure 2-19 Scanning the nearby Wi-Fi SSIDs

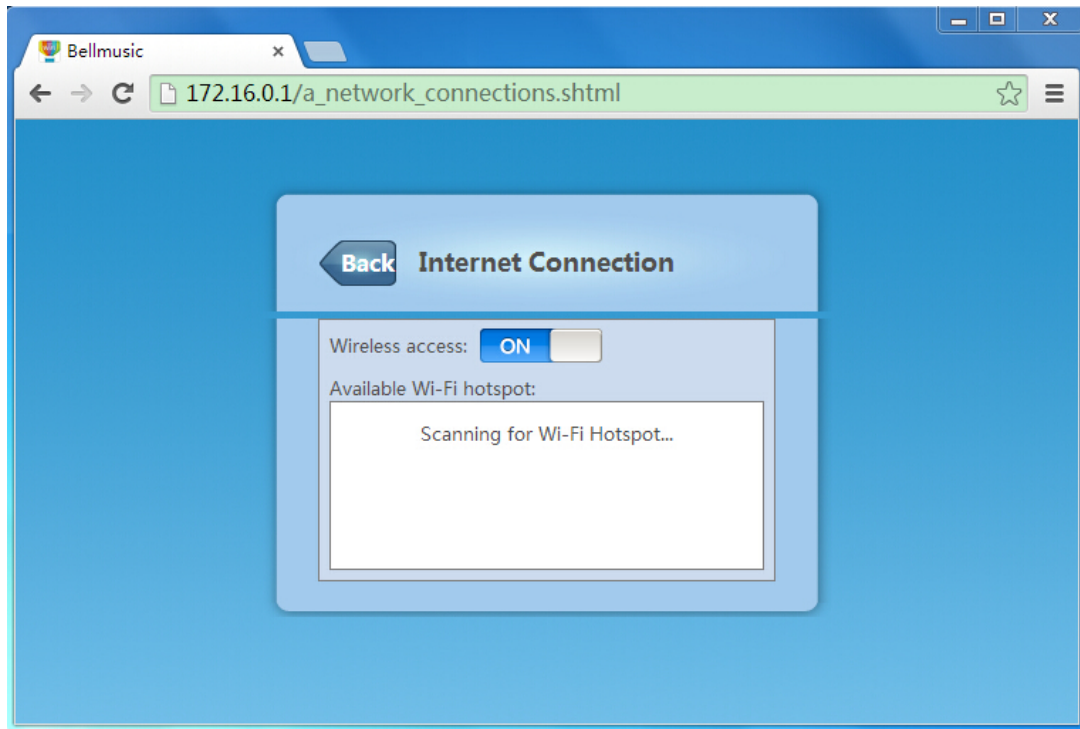


Figure 2-20 The nearby Wi-Fi SSIDs

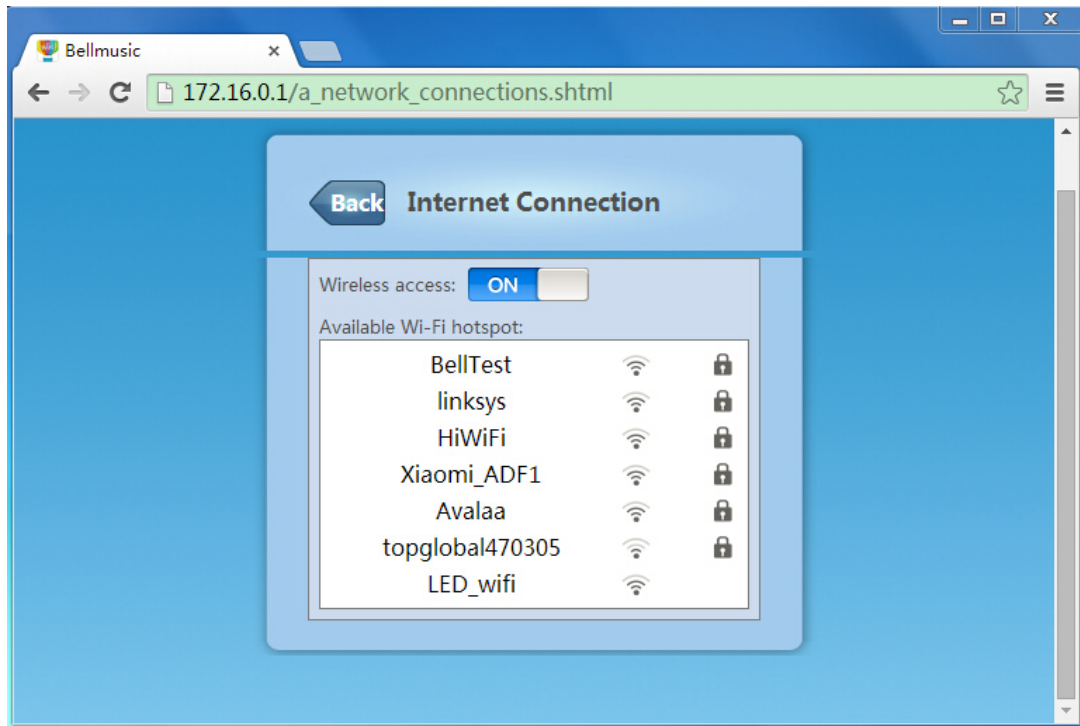


Figure 2-21 Click “BellTest”, it will pop-up a window.

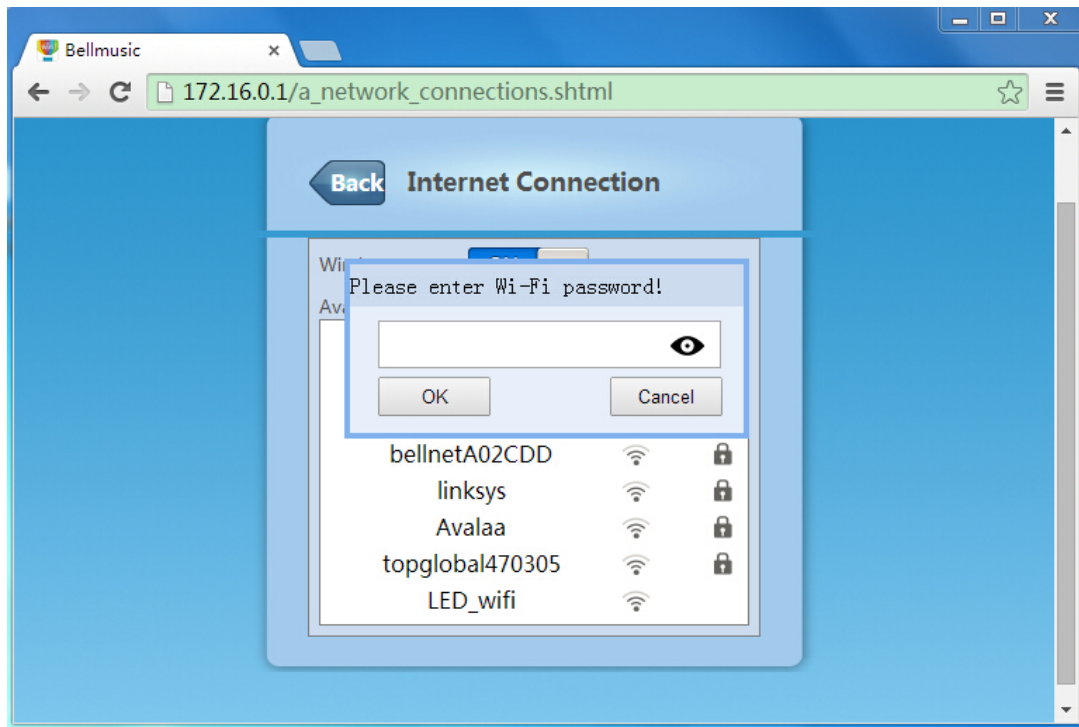


Figure 2-22 Input the Wi-Fi password of “BellTest”



Figure 2-23 Wait for 25 seconds

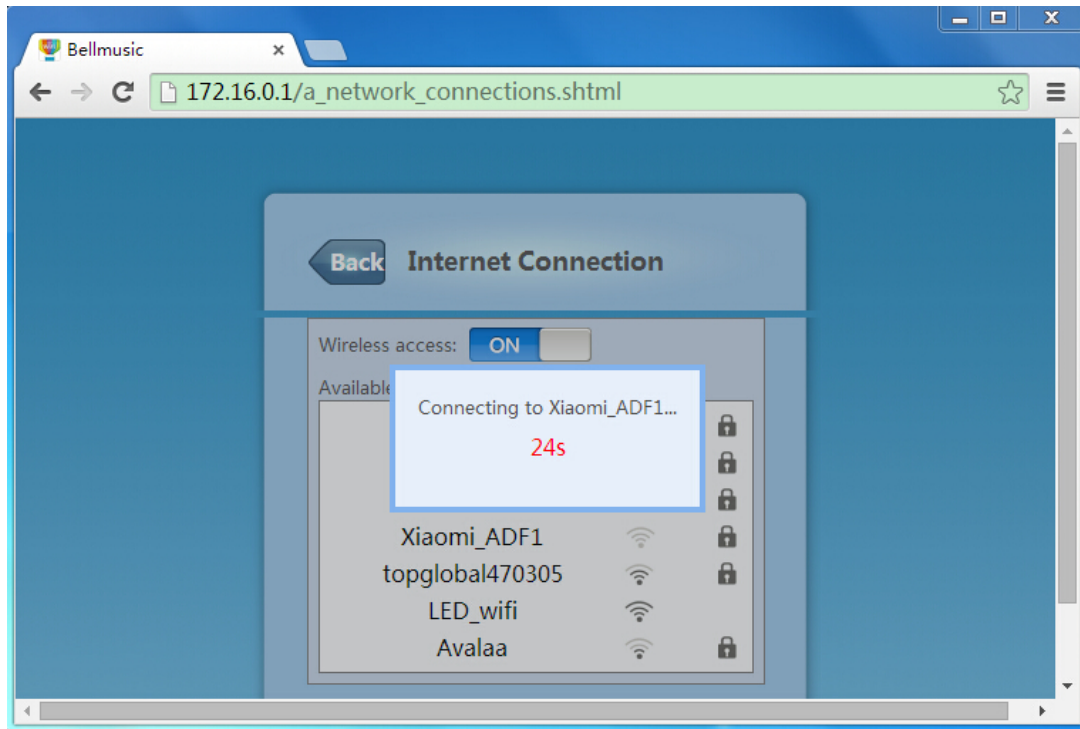


Figure 2-24 Scanning for nearby Wi-Fi SSIDs again.

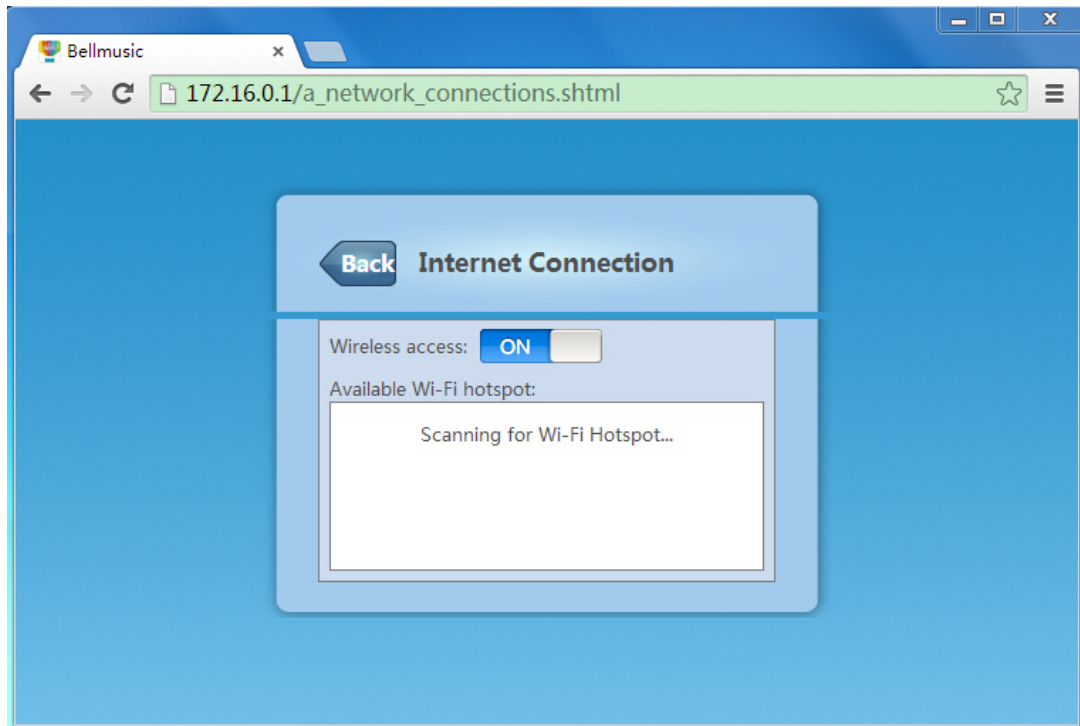
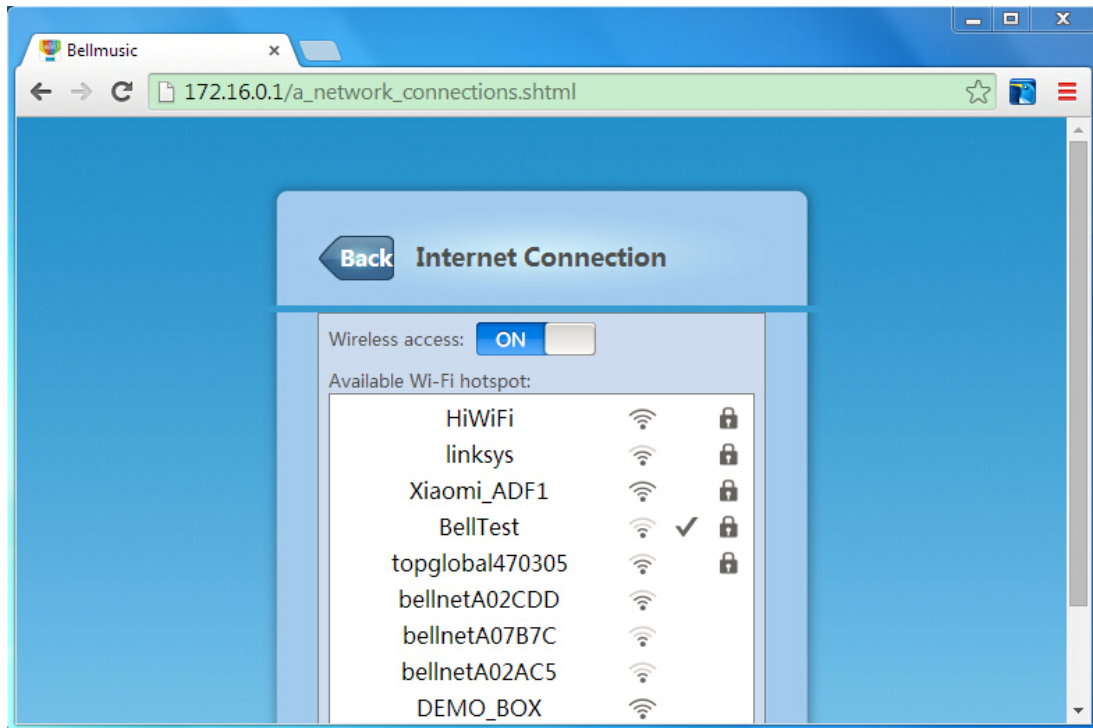


Figure 2-25 *After a few seconds, Q Station displays all the nearby SSIDs again.
Then you'll see BellTest has been connected successfully.*



2.2.4 Upgrade Firmware

You can upgrade the Q Station's firmware in this function:

Click "Upgrade Firmware", to enter the screen (*Figure 2-26*).

(If you don't want to upgrade firmware, you can click "Back" to go back to configuration main page.)

There're 2 ways to upgrade firmware:

- Upgrade by yourself
- Auto Upgrade

Notice:

- If you upgrade firmware by PC, support above 2 ways of upgrade.
- If you upgrade firmware by mobile, only support Auto Upgrade.

To upgrade by yourself, please follow below steps:

1. **Click "Browse"**.

It will pop-up a window to let you select the firmware file in PC.

Choose the firmware file which you want to upgrade. (*Figure 2-27*)

2. **Click "Open"**, you can see the selected firmware file on page. (*Figure 2-28*)

3. **Click "Upgrade Firmware"**.

It will pop-up a window: File uploaded success! Continue to upgrade? (*Figure 2-29*).

4. **Click "OK"**, to proceed the upgrading. (*Figure 2-30*).

If you want to quit the upgrading, click Cancel.

5. When the process is 100%, **refresh** the page. (*Figure 2-31*).

The new firmware has been upgraded successfully.

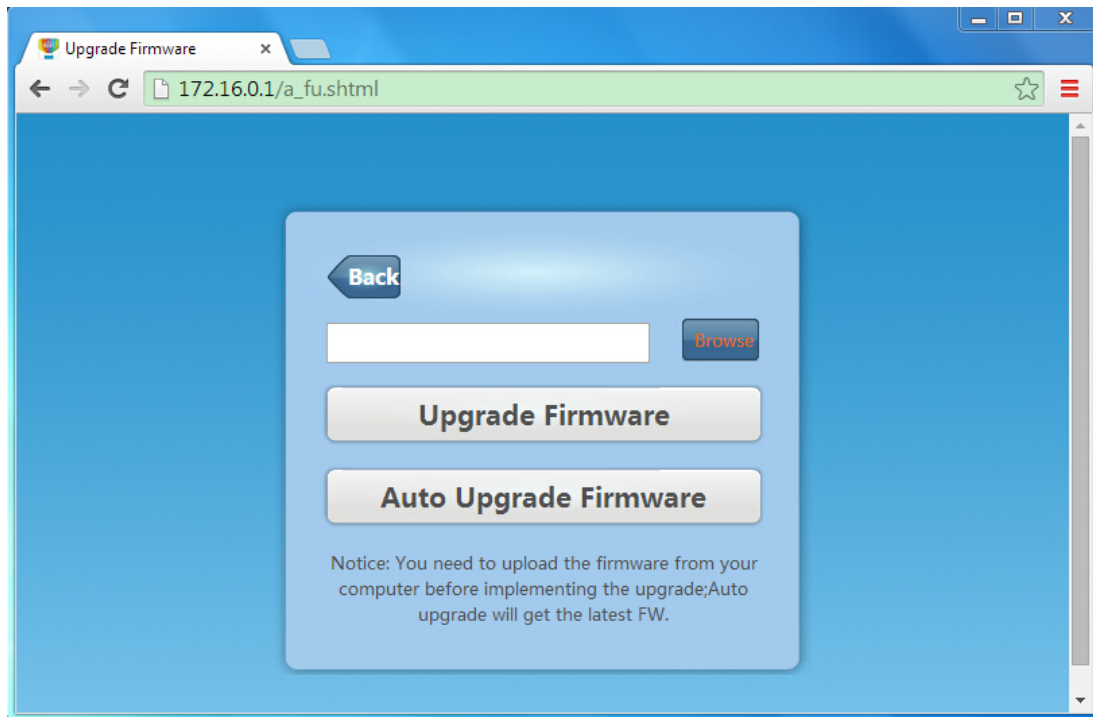
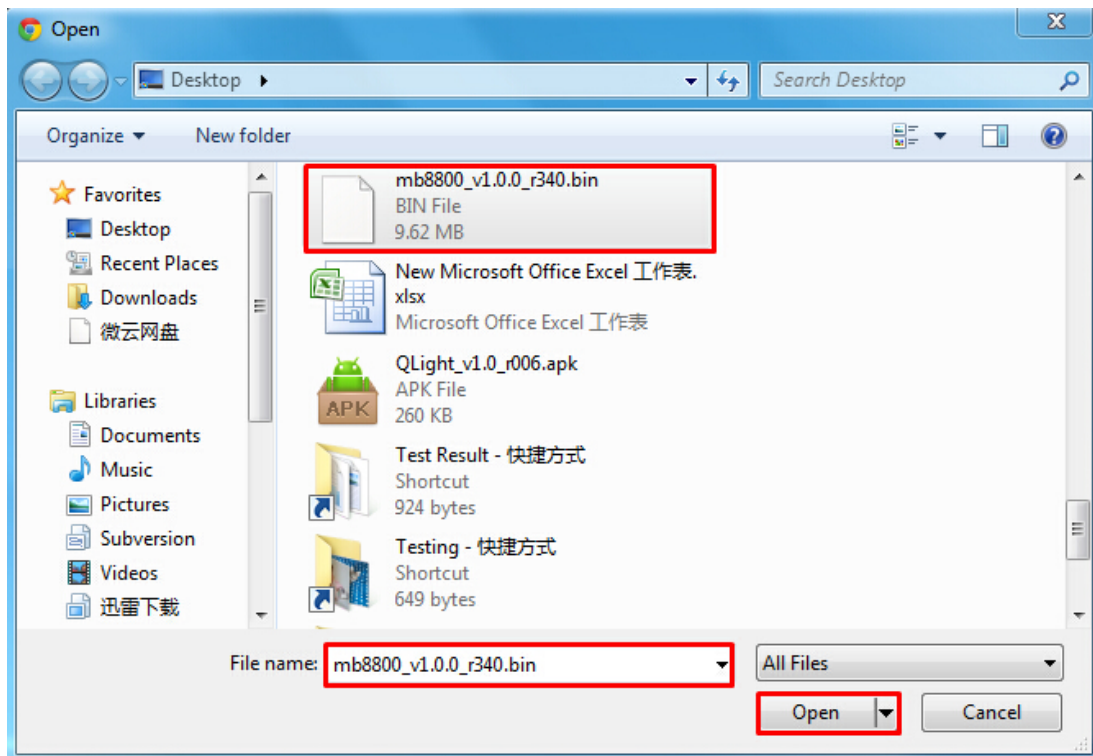
Figure 2-26 **Upgrade Firmware** screenFigure 2-27 **Select the firmware file in PC**

Figure 2-28 You can see the selected firmware file on page.

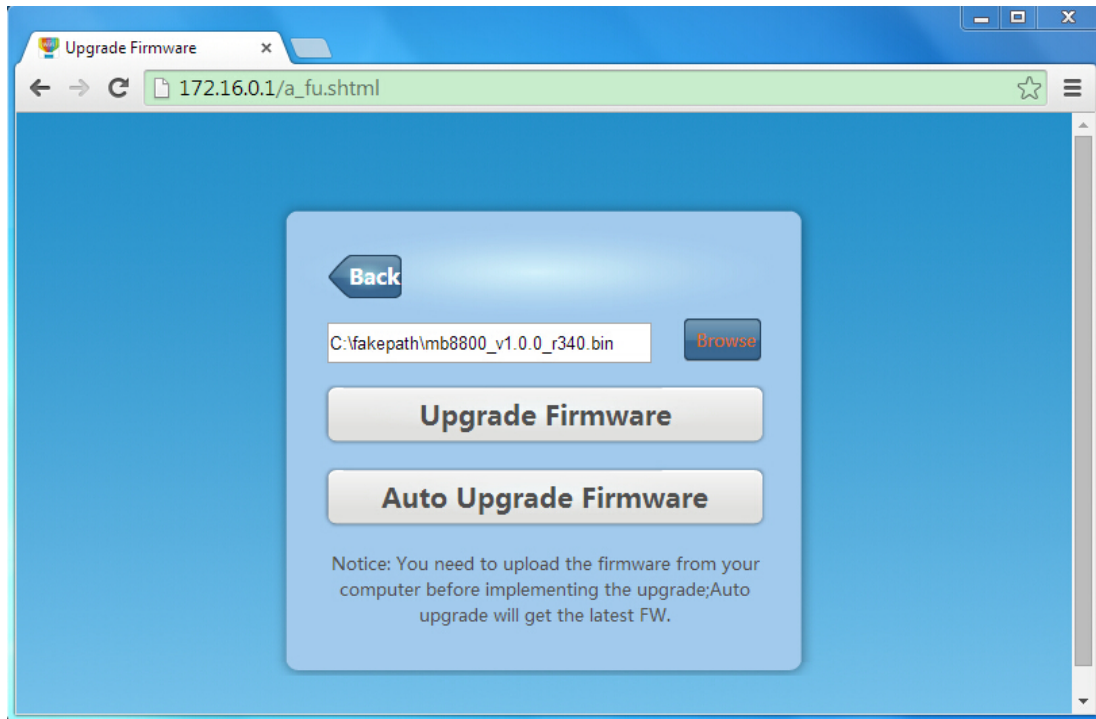


Figure 2-29 Click "Upgrade Firmware", it will pop-up a window.

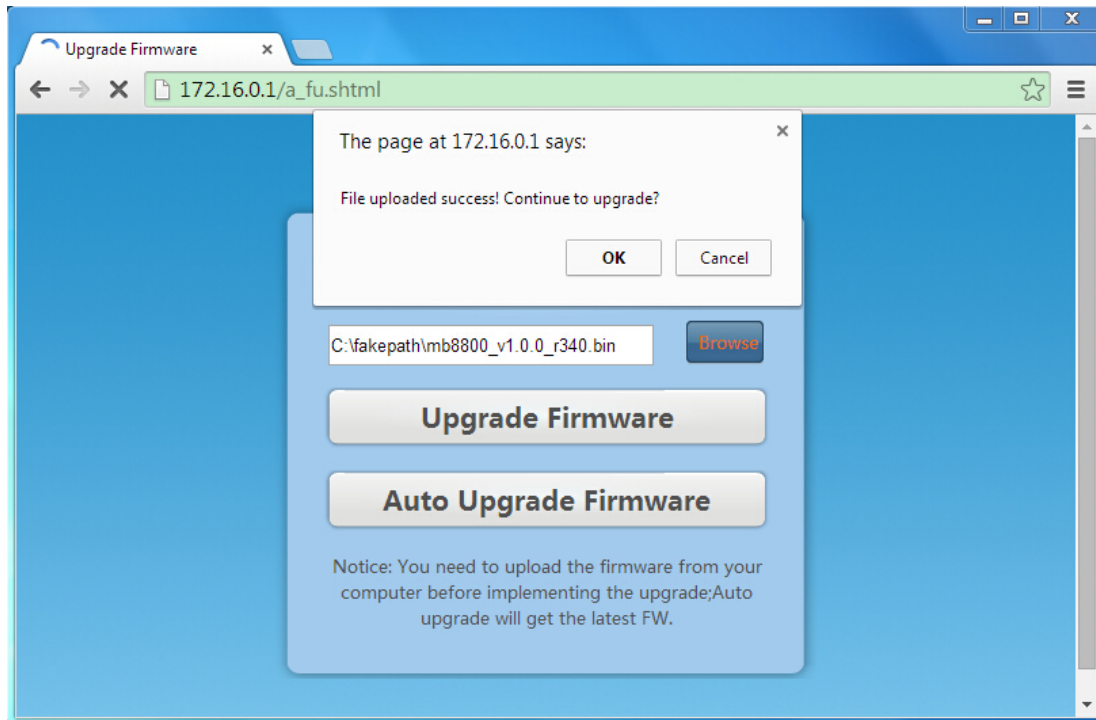


Figure 2-30 **Click OK, upgrade will proceed.**

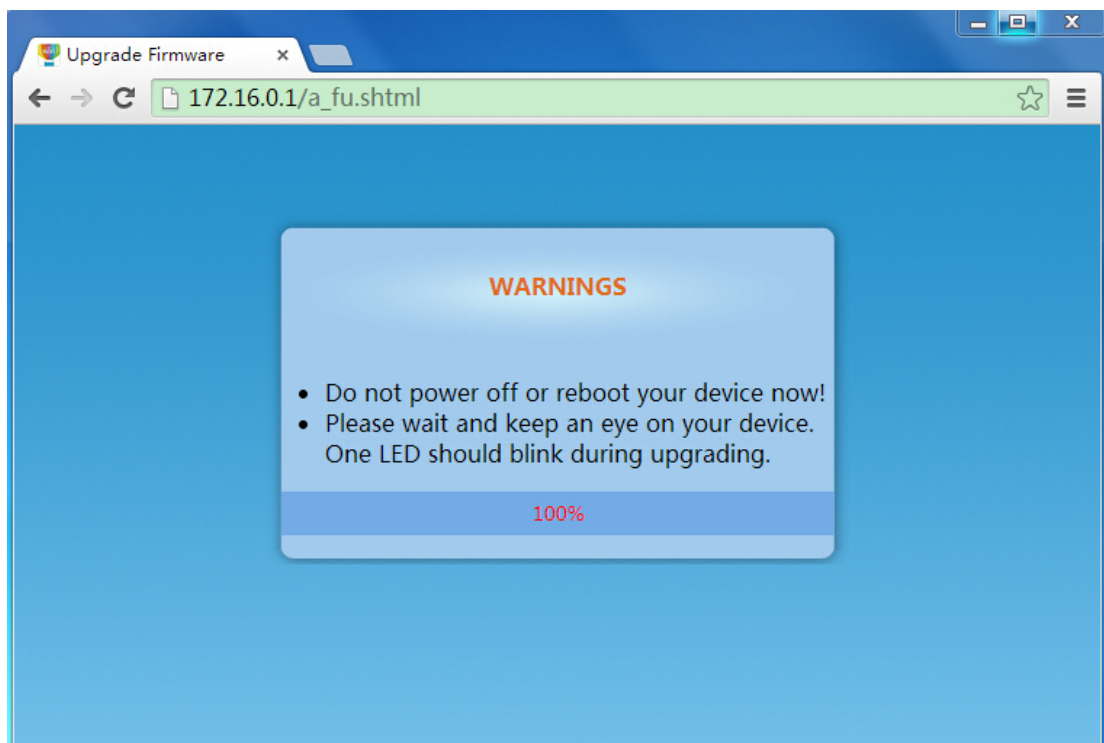
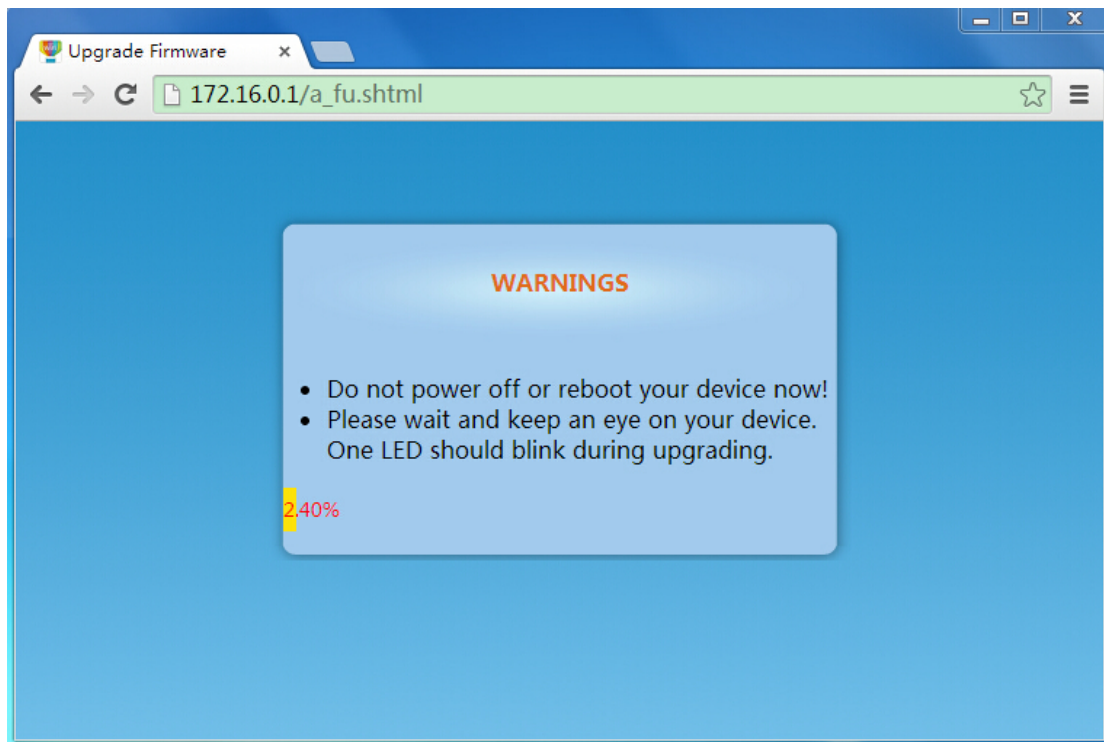
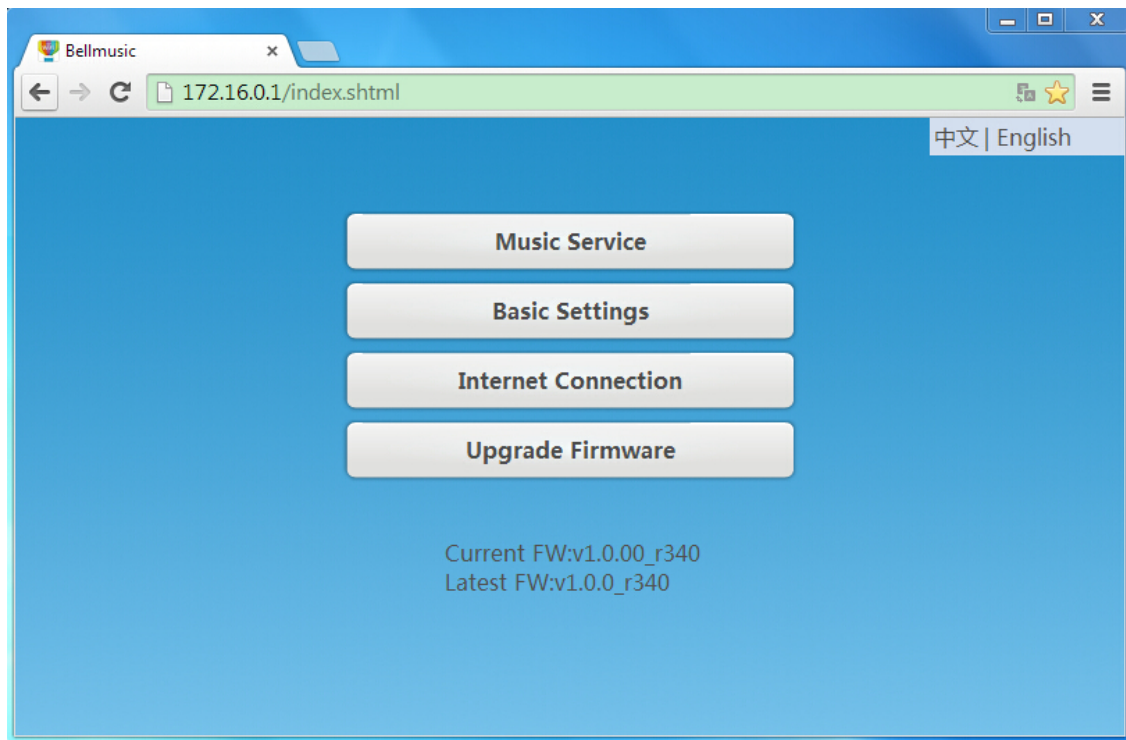


Figure 2-31 When process is 100%, refresh the page. New Firmware has been upgraded.



To auto upgrade, please follow below steps:

1. In Upgrade Firmware screen (Figure 2-26), Click Auto Upgrade Firmware.

You will see at the bottom of screen, there's a circle blinking. (Figure 2-32)

2. Then it will pop-up a window: File uploaded success! Continue to upgrade?
(Figure 2-33).

3. **Click "OK"**, to proceed the upgrading. (Figure 2-34).

If you want to quit the upgrading, click Cancel.

4. When the process is 100%, **refresh** the page. (Figure 2-35)

The new firmware has been upgraded successfully.

Notice:

If you use "Auto Upgrade Firmware" in mobile, when the process is 100%, you need to connect your mobile Wi-Fi to Q Station again. Then go to <http://172.16.0.1>, you will see the Firmware has been upgraded.

Figure 2-32 Firmware is upgrading.

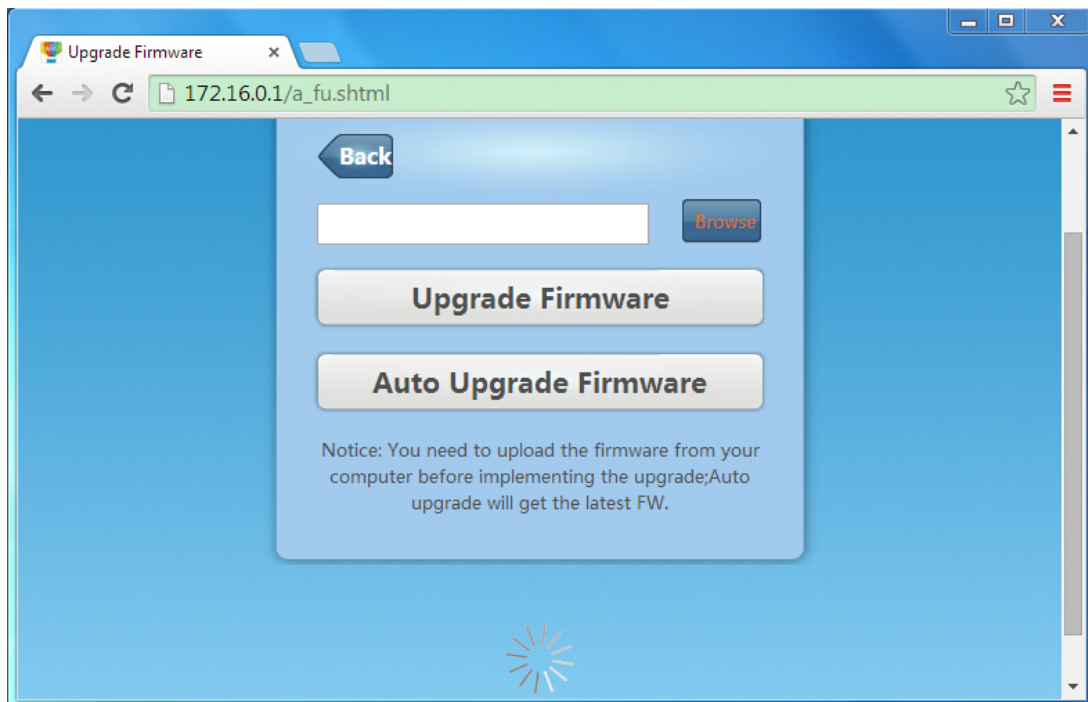


Figure 2-33 On the page, pop-up a window

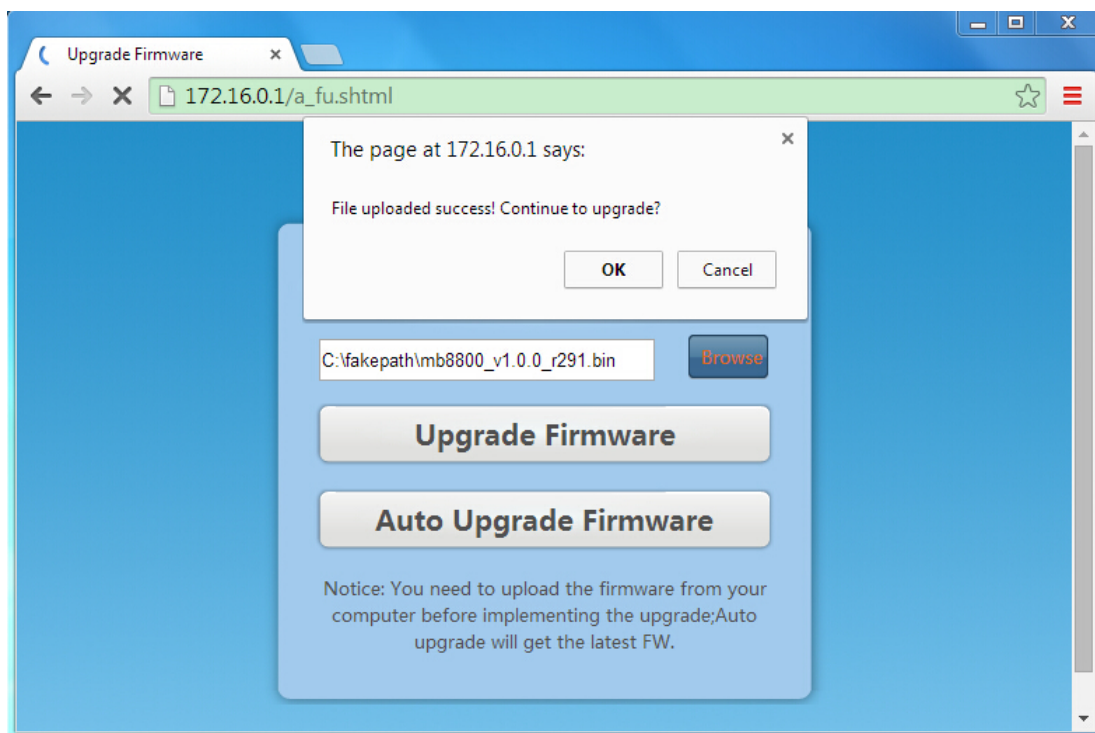


Figure 2-34 **Click OK, upgrade will proceed.**

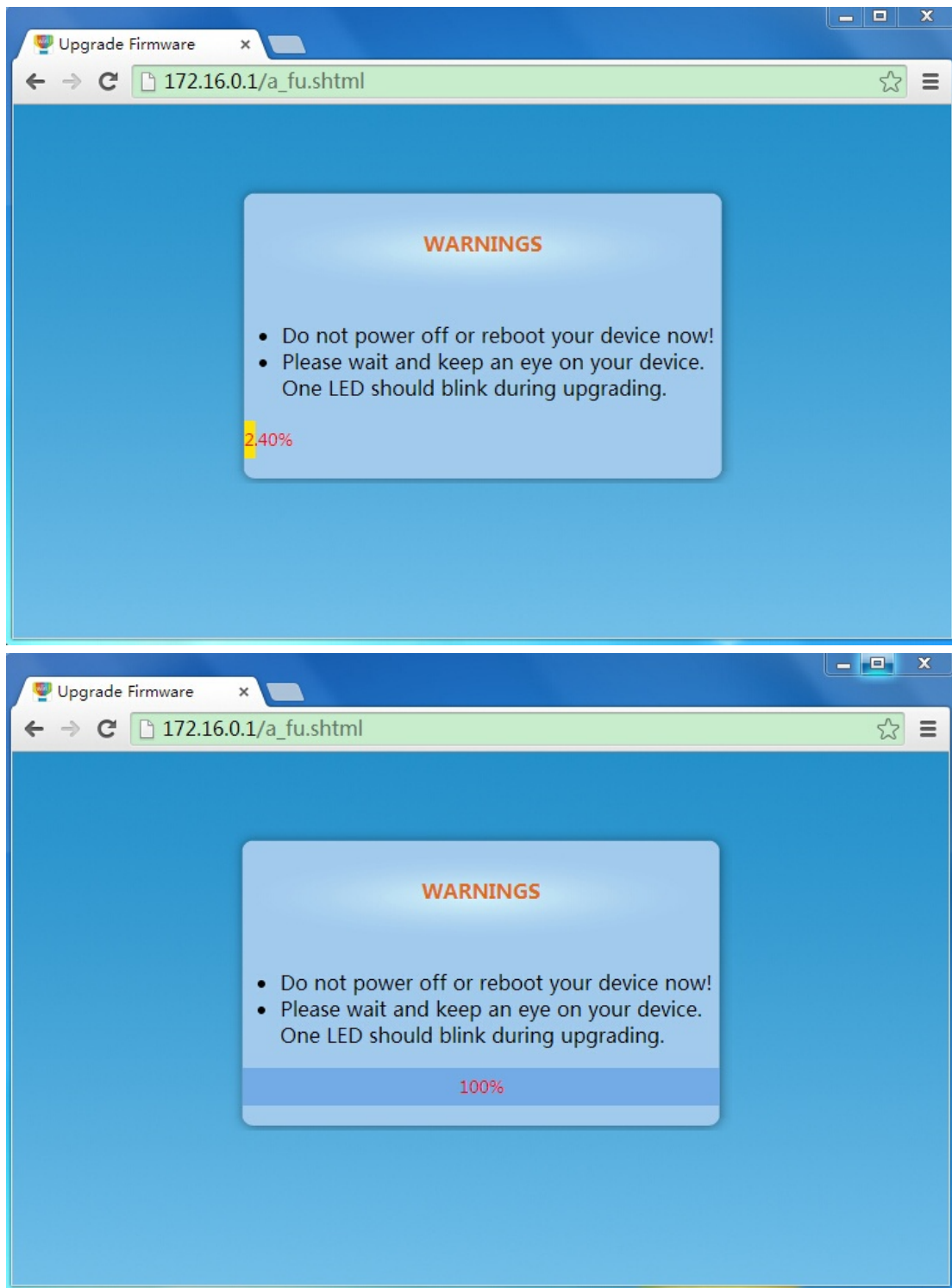
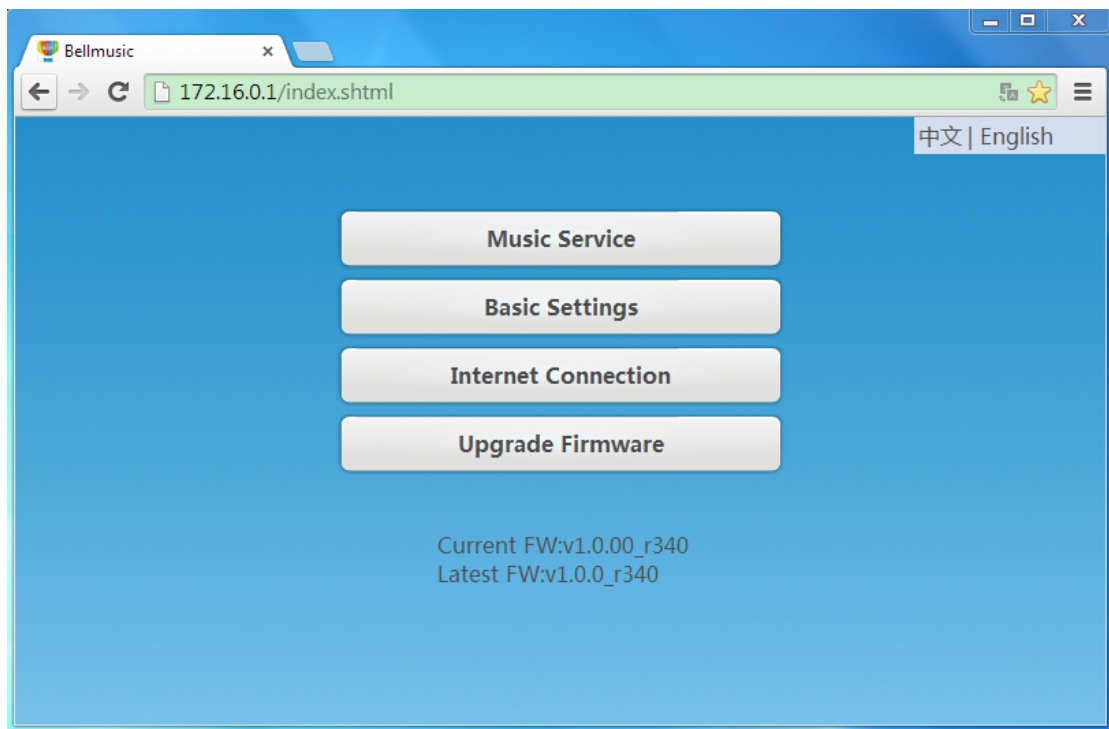


Figure 2-35 When process is 100%, refresh the page. New Firmware has been upgraded.



3 BellQPro in mobile

In this section, we'll introduce how to use the “**BellQPro**” application in mobile.

3.1 Preparation

1. Make sure in **mobile WLAN**: You have connected to **Q Station Wi-Fi SSID (Known as the Device Name)**: bellnetXXXXXX (by default). (Figure 3-1)
(Device Name is set in Basic Settings of Q Station Configuration home page, Refer to 2.2.2 Basic Settings)
2. Download the APP of “**BellQPro**” in APPs store. And install it.
3. Click the logo of “**BellQPro**” in your mobile, to enter **BellQPro** mobile interface.
4. The first time you enter, it will let you choose your device SN (which is on the back of your Q Station, such as MQXXXXXXXXXXXXXX) (Figure 3-2)

Notice:

The second time you enter the BellQPro, it won't make you choose it. It will save the device you chose last time.

5. After you chose the device SN, then it will display the light list which have been matched with your device. (Figure 3-3)

Figure 3-1 In mobile WLAN: Connect to Device Name

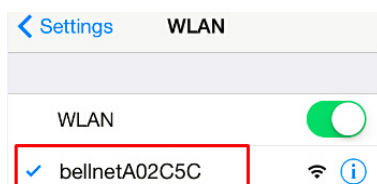


Figure 3-2 You need to choose the device SN the first time

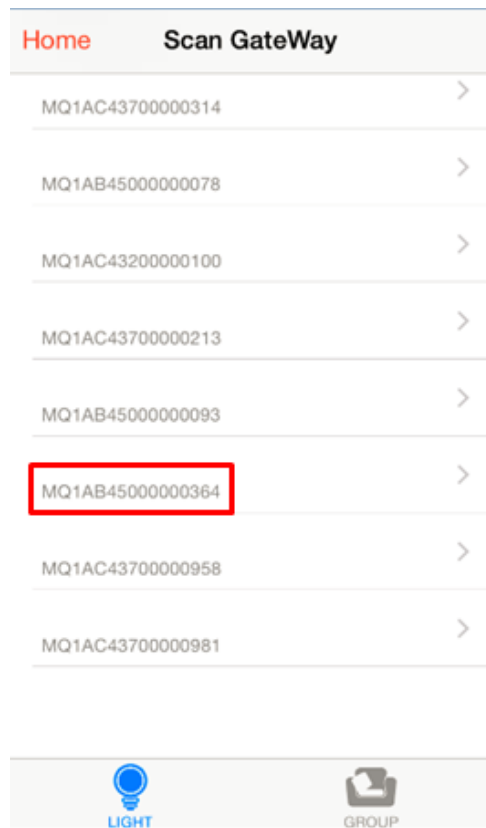
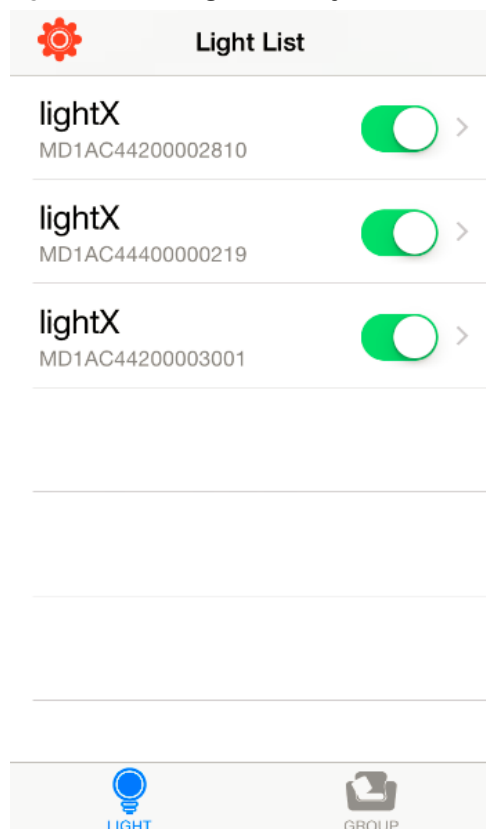


Figure 3-3 The light list of your device



3.2 Single Light Control

- **On Light List page (Figure 3-3), you can modify the light title.**
 1. Press the lightX for a while (lightX is the default light title) (Figure 3-4), then it will pop-up a window (Figure 3-5).
 2. Enter the light title, then click OK (Figure 3-6), then the light title has been changed (Figure 3-7).

Figure 3-4 **Press the title for a while**

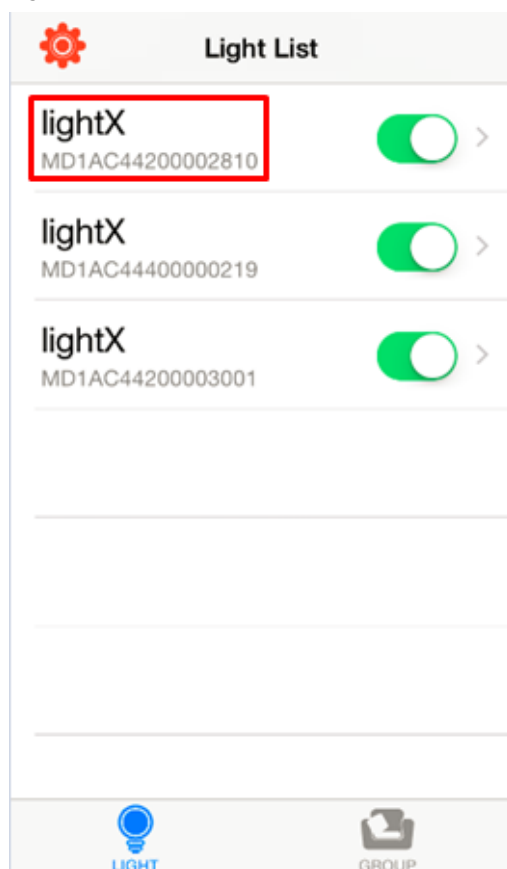


Figure 3-5 **Modify light title page**

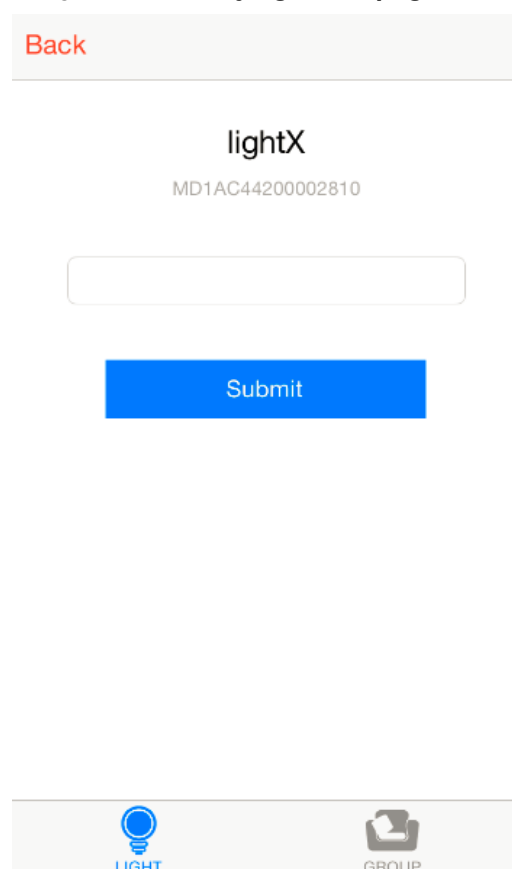



Figure 3-6 Enter new title, click OK

[Back](#)

lightX

MD1AC44200002810


LIGHT




GROUP


Figure 3-7 Light Title has been changed



Light List


Red

MD1AC44200002810

 >


lightX


MD1AC44400000219


 >

lightX

MD1AC44200003001

 >


LIGHT


GROUP

- **On Light List page** (*Figure 3-3*), you can control single light.

- **Click the Light SN** (e.g. MD1AC44200002810) which you want to control, it will enter the single light control page. (Figure 3-8, Figure 3-9)

Figure 3-8 **Single Light Control page**
(Color Mode)

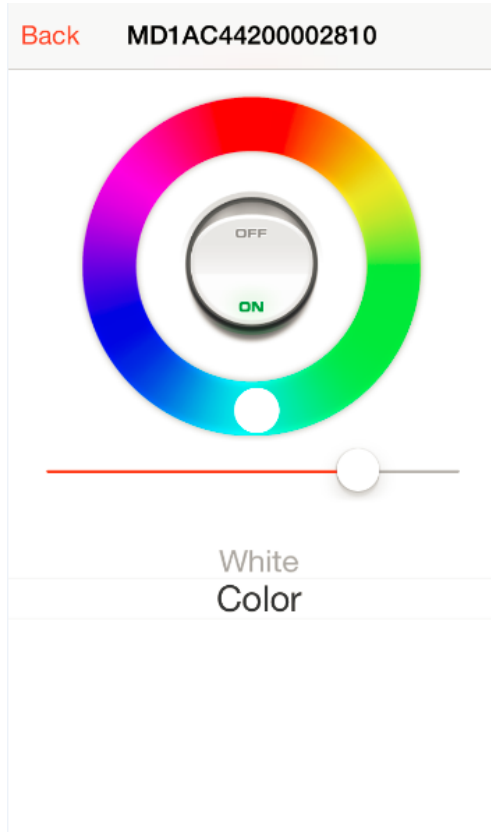
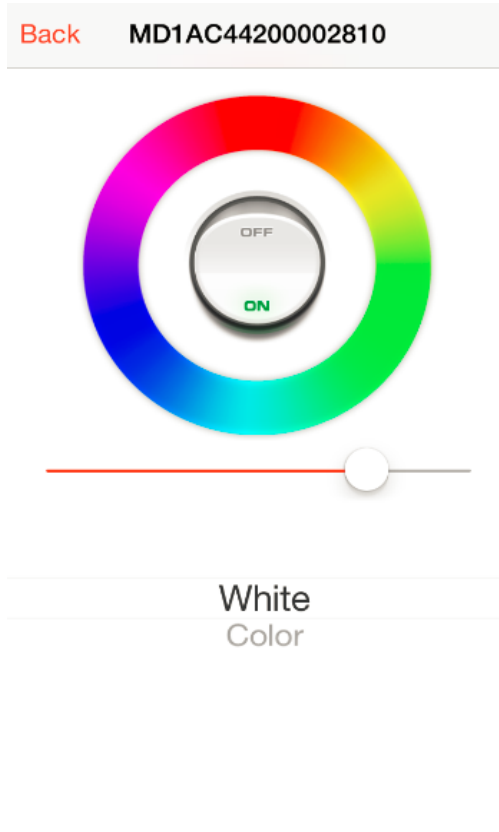


Figure 3-9 **White Mode**




- **Light Control:**

ON&OFF:

Click “off”, the Q Bulbs will be turned off.

Click “on”, the Q Bulbs will be turned off.


Adjust the color of Q Bulb:


Slide the little circle , to adjust the color of Q Bulbs.

There're hundreds of colors you can choose.

Move the intensity bar  to adjust the brightness.

Specified Color:

Slide to **White**, then the Q Bulb will become white color. The little circle  will disappear.
You cannot adjust the color of light in White Mode.

Slide to **Color**, then the Q Bulb will become the color where the dot  stays at.

3.3 Group Light Control

3.3.1 All Lights & Music Group

- Click “Group”, enter the **Group List page** (*Figure 3-10*), you can control the lights which are in the same group.

Notice:

By default, there're 2 groups on the page.

And the 2 specific groups (All Lights, Music) are not allowed to delete.

- Click **All Lights** to enter all lights control page. (*Figure 3-11*)

On the page, you can control all lights at one time.

- Click **Music** to enter music lights page. (*Figure 3-12*)

On the page, you can select the lights which you want to synchronize with music.

After the setting done, when you play music by Q Station speaker, the lights you chosen will blink synchronously with the music.

- One button to control whether the lights in Music Group blink with music.

music



> means the lights in Music Group will blink with music.

music



> means the lights in Music Group won't blink with music.

Figure 3-10 **Group List** page

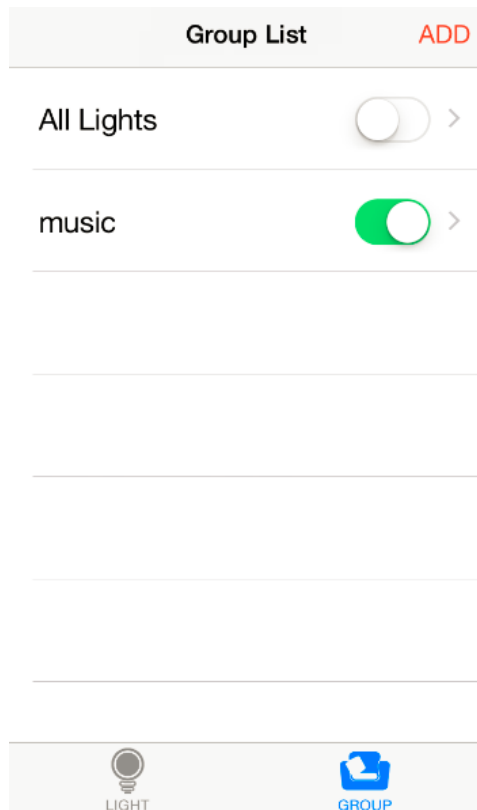
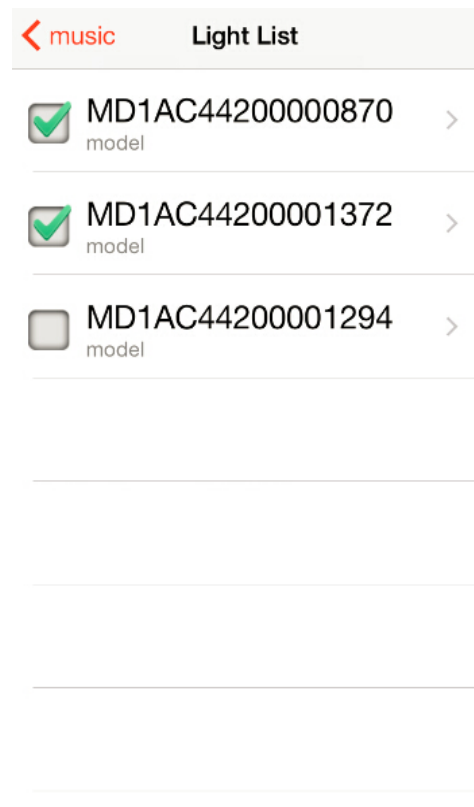


Figure 3-11 **All Lights Control** page



Figure 3-12 **Music group**



3.3.2 Add Group

1. **On Group List page** (Figure 3-10), **Click ADD** to enter **add group page**.
(Figure 3-13)
2. **Enter the new group name, and click submit.** (Figure 3-14)
Then the new group will be added. (Figure 3-15)
3. **Click the new group name** to enter the **group light control page**. (Figure 3-16)
Click Sync Light to enter the light list.
4. **Choose the lights** which you want to add in the new group. (Figure 3-17)
Click new group name on top left (e.g. bedroom) to enter group light control page.
At the time, you control the Color Palette, will see the lights you just chose will coordinate with your operation.

Figure 3-13 Add Group page

Back ADD Group

Title

Submit

LIGHT GROUP

Figure 3-14 Input new group name, click submit

Back ADD Group

Title

bedroom

Submit

LIGHT GROUP

Figure 3-15 **New Group was added**

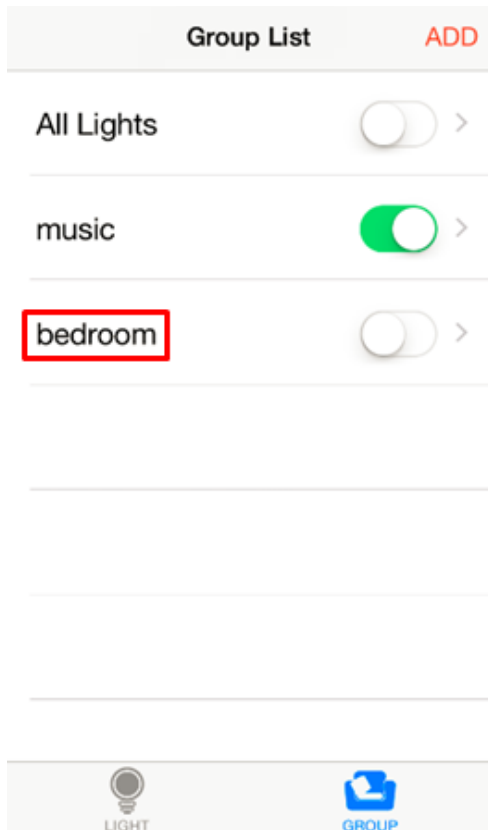


Figure 3-16 **Group Light Control page**

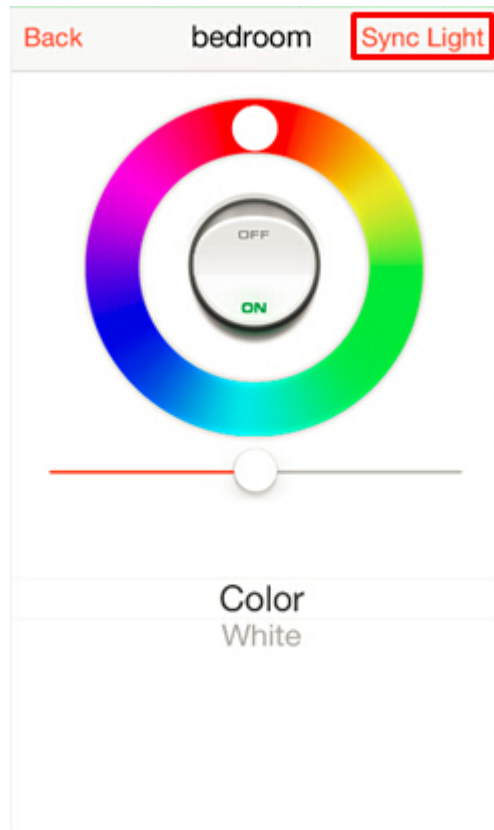
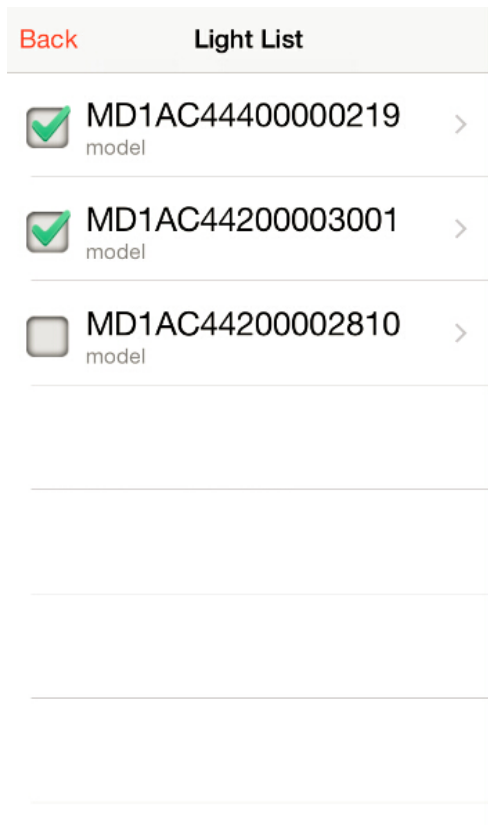


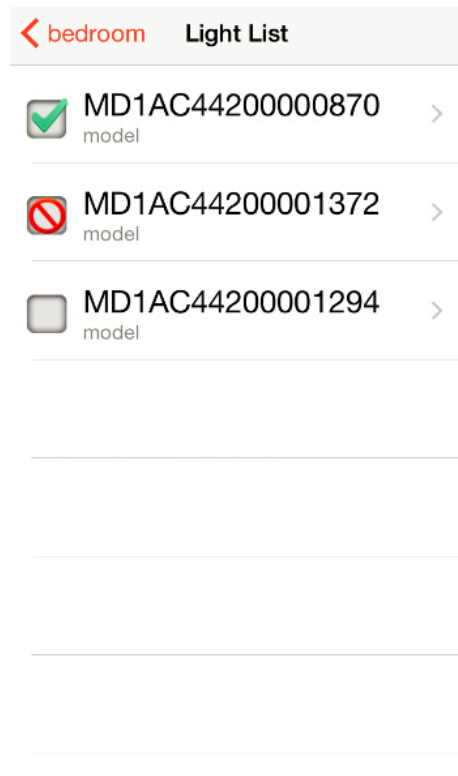
Figure 3-17 **Choose the lights which you want to add in the new group**






3.3.3 Sync Light status


- On group light control page (Figure 3-16), click Sync Light to enter Sync Light List (Figure 3-18), displaying all the lights which are matched with your Q Station.

Figure 3-18 **Sync Light List**



- There are three Light status:

	MD1AC44200000870 model	Means the light will be controlled by current group.
	MD1AC44200001372 model	Means the light has been chosen by other group.
	MD1AC44200001294 model	Means the light does not belong to any group.

- No matter what status are the lights, you can choose any of the lights which you want to add in the new group.
- After you chose the lights, the lights will be ticked as 

3.3.4 Modify Group

1. On Group List page (Figure 3-19), **press the group name** (e.g. bedroom) which you want to modify for a while, then it will pop-up the **modify group page**. (Figure 3-20)
2. **Enter the group name, click submit** (Figure 3-21)
3. Then the group name has been changed. (Figure 3-22)

Figure 3-19 **Group List page**

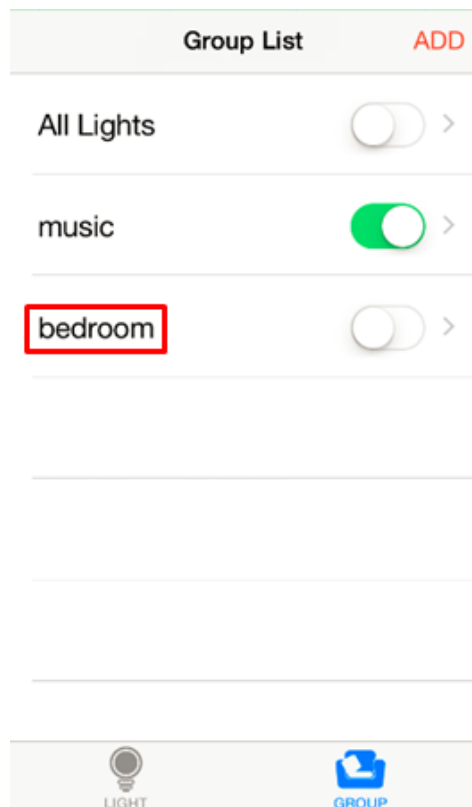


Figure 3-20 **Modify Group name**

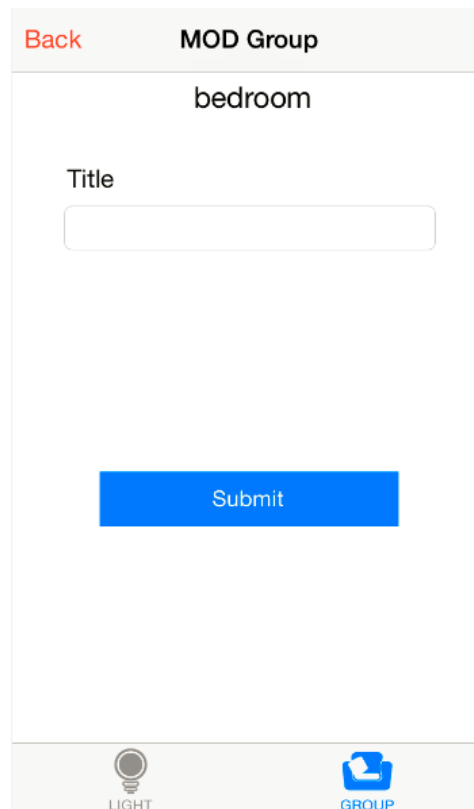


Figure 3-21 Enter the group name, click submit

Back
MOD Group

bedroom

Title

Submit

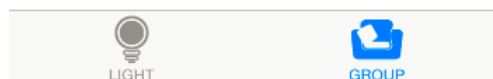


Figure 3-22 Group Name has been changed

Group List
ADD

All Lights	<input type="checkbox"/>	>
music	<input checked="" type="checkbox"/>	>
room	<input type="checkbox"/>	>

LIGHT
GROUP

3.3.5 Delete Group

1. On Group List page (Figure 3-23), **press the group name** (e.g. room), and **slide to left side**, will see the **delete button displayed**. (Figure 3-24)
2. **Click Delete**. Then the group will be deleted. (Figure 3-25)

Figure 3-23 **Group List page**

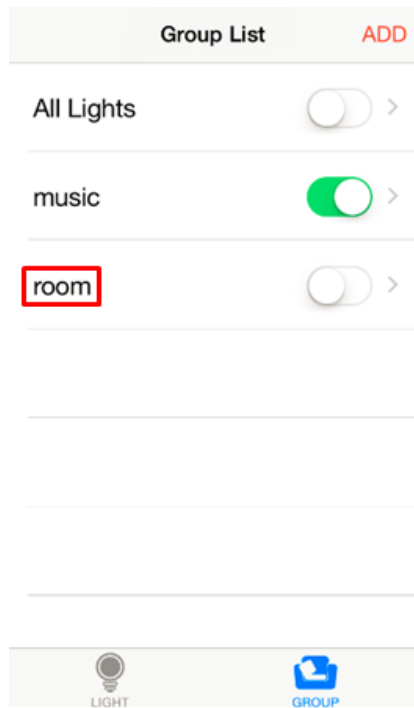


Figure 3-24 **Delete Button displayed**

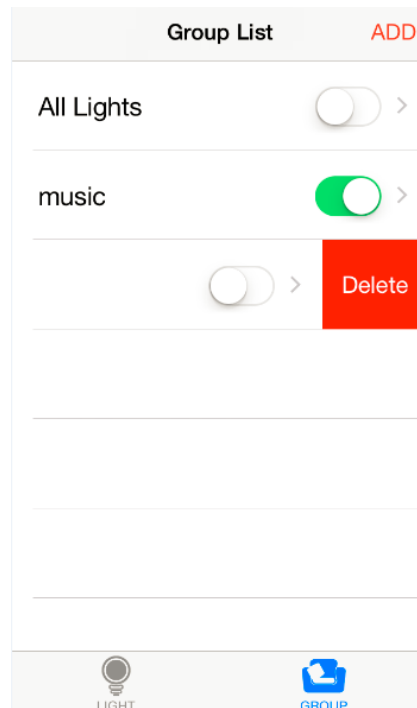
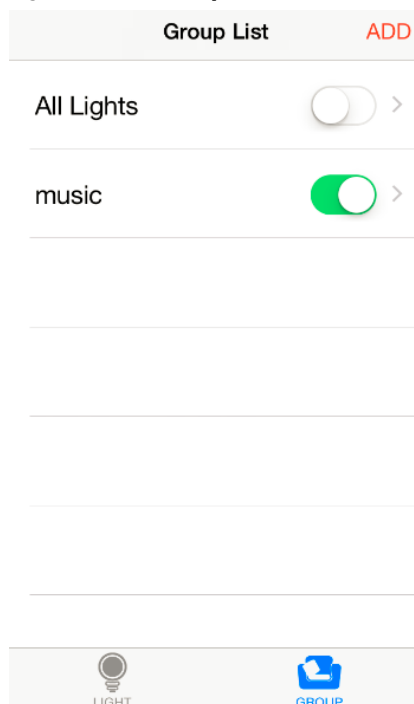



Figure 3-25 **Group “room” was deleted**

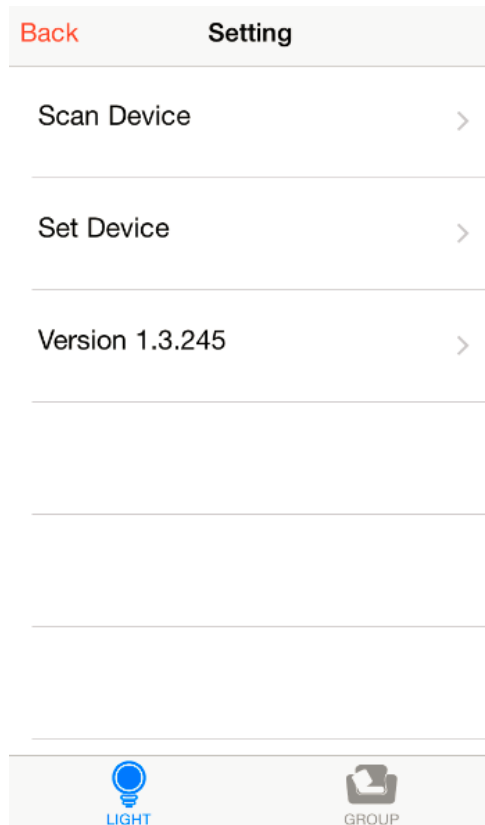


3.4 Settings

Click  to enter Q Station setting page. (Figure 3-26)

There're 3 lines: Scan Device; Set Device; Version NO. (The iOS APP version).

Figure 3-26 **Q Station setting page**





3.4.1 Scan Device

Click “Scan Device”, to enter scan device page. (Figure 3-27)

Click the device SN, you can choose the device you want to control.

Figure 3-27 Q Scan Device page

Home	Scan GateWay
	MQ1AC43700000314 >
	MQ1AB45000000078 >
	MQ1AC43200000100 >
	MQ1AC43700000213 >
	MQ1AB45000000093 >
	MQ1AB45000000364 >
	MQ1AC43700000958 >
	MQ1AC43700000981 >
 LIGHT	 GROUP

3.4.2 Set Device

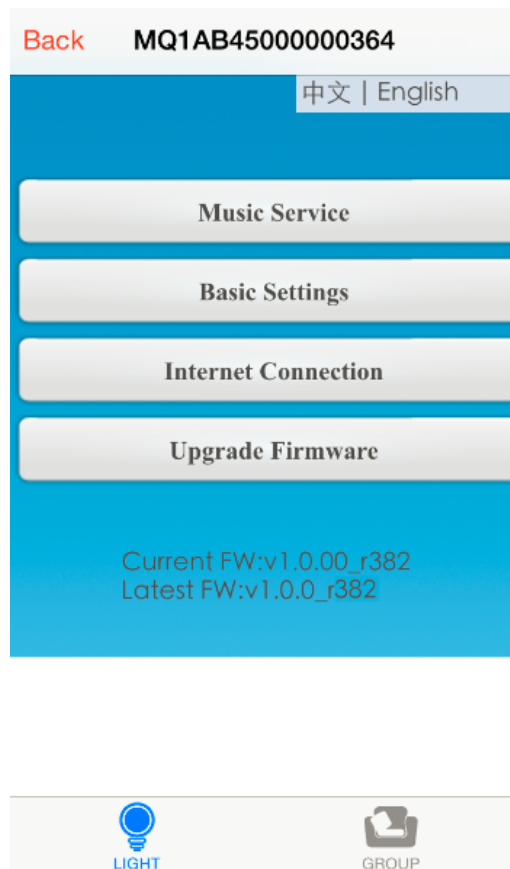
Click “Set Device”, to enter **Q Station configuration home page**. (Figure 3-28)

Notice:

It is same as the configuration page in PC.


(Refer to 2.2 Configuration in detail)

Figure 3-28 **Q Station configuration home page**



4 Play Music & Light Show

■ Steps:

1. Click the iOS built-in APP “Music”  to play music. (Figure 4-1)
2. Select a song, then play the song.
3. Swipe the screen to select speaker in AirPlay, choose “**bellmusicXXXXXX**” as your speaker. (Figure 4-2)

Notice:

- By default, Q Station Speaker Name is “**bellmusicXXXXXX**”.
(XXXXXX is the last 6 digit of your MAC)
- AirPlay protocol allows you to stream music to the stereo or speaker which is connected to the Q Station. And the Q Bulbs will blink synchronously with your music.

Figure 4-1 iOS built-in APP “Music”

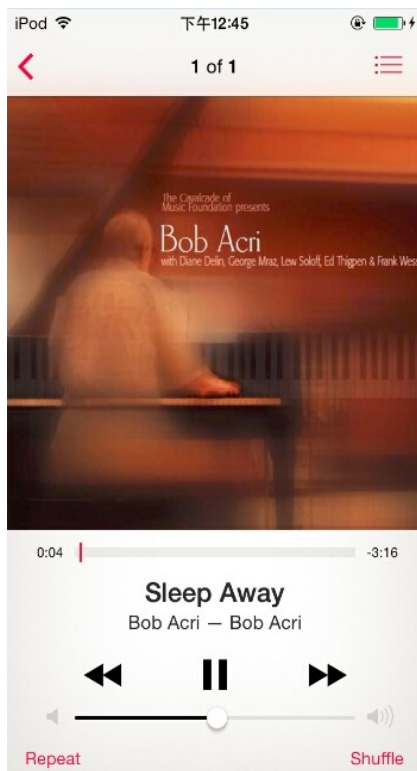


Figure 4-2 Choose “bellmusicXXXXXX” as your speaker

